

PROPOSED RECONSTRUCTION
OF
HARVARD BRIDGE

1919

THE RECONSTRUCTION OF HARVARD BRIDGE

The drawings show a permanent and handsome structure of stone and concrete, built at a minimum of expense. The present unsightly and unsafe bridge, is not destroyed but merely modified. It becomes the core of the new bridge. The easy grades of the old bridge and draw are not changed although the width of the bridge may be increased. The present alternating long and short spans are equalised.

Throughout the work of reconstruction, public traffic would not be interrupted. The present plank roadway facilitates the delivery and pouring of the new concrete arches and piers and will prove an important factor in keeping down the cost.

The island shown in these drawings, while not necessary to the design, would result in a saving in the cost of reconstructing the bridge.

The memorials shown on the drawings are entirely independent of the reconstruction of the bridge.

This reconstructed bridge was first projected in Drawings and Report made for the Metropolitan Improvement League, February 15th, 1910 by Robert P. Bellows and Ralph W. Gray.

The illustrated report on proposed island to Joint Board on Metropolitan Improvements Commission, Commonwealth of Massachusetts 1911, Pages 95-103 by Robert P. Bellows and Ralph W. Gray goes into the subject in detail.

THE RECONSTRUCTION OF HARVARD BRIDGE
TOGETHER WITH
A MEMORIAL TO OUR SOLDIERS AND SAILORS

I.

~ THE DRAWINGS SHOW A PERMANENT AND HANDSOME STRUCTURE OF STONE AND CONCRETE BUILT AT A MINIMUM OF EXPENSE.
~ THE PRESENT UNSIGHTLY BRIDGE IS NOT DESTROYED BUT MERELY MODIFIED ~ IT BECOMES THE CORE OF THE NEW BRIDGE.
~ THE EASY GRADES OF THE OLD BRIDGE AND DRAW ARE NOT CHANGED ALTHOUGH THE WIDTH OF THE BRIDGE MAY BE INCREASED ~ THE OLD PIERS AND PILING ARE INCORPORATED IN THE NEW PIERS ~ THE PRESENT ALTERNATELY LONG AND SHORT SPANS BETWEEN THE PIERS ARE EQUALIZED #
~ THROUGHOUT THE WORK OF RECONSTRUCTION PUBLIC TRAFFIC WOULD NOT BE INTERRUPTED ~ THE PRESENT PLANK ROADWAY OF THE BRIDGE WHICH IS EASILY TAKEN UP FACILITATES THE DELIVERY AND POURING OF THE NEW CONCRETE ARCHES AND PIERS AND WILL PROVE AN IMPORTANT FACTOR IN KEEPING DOWN THE COST.
~ THE RECONSTRUCTION IS INDEPENDENT OF ANY BASIN ISLAND SCHEME # BUT LENDS ITSELF TO SUCH A TREATMENT.

II.

~ A FINE WAR MEMORIAL AT THE BOSTON END OF HARVARD BRIDGE COULD BE BUILT INDEPENDENTLY OR AS A PART OF ANY RECONSTRUCTION OF THE BRIDGE PROPER ~ AS PRESENTED ON THE DRAWINGS THE NEW FLANKING MOTIVES DO NOT ENCROACH ON THE ROADWAY OR SIDEWALKS OF THE EXISTING BRIDGE WHICH WOULD REMAIN OPEN FOR TRAFFIC DURING THE PERIOD OF CONSTRUCTION.
~ THE MEMORIAL TAKES THE FORM OF TWO TRIUMPHAL COLUMNS AND AT THE BASE OF EACH A COMMEMORATIVE BUILDING TO ENSHRINE WAR RECORDS * CITATIONS * TROPHIES AND INSCRIPTIONS.
~ THESE SMALL BUILDINGS ARE INSPIRED BY THE TEMPLE OF VICTORY ON THE ACROPOLIS AT ATHENS ~ THE SIZE AND SCALE OF THE ORIGINAL IS APPLICABLE WITHOUT CHANGE ~ THE DUAL TREATMENT SYMBOLIZING THE ARMY AND NAVY CREATES A PLACE OF PILGRIMAGE IN HONOR OF OUR BRAVE SOLDIERS AND SAILORS AND PROVIDES A FITTING ENTRANCE TO THE CITY OF BOSTON.

FIRST PROJECTED IN DRAWINGS AND REPORT MADE FOR THE METROPOLITAN IMPROVEMENT LEAGUE FEB. 15, 1910, BY R. P. BELLOWES AND R. W. GRAY.

ILLUSTRATED REPORT TO JOINT BOARD ON METROPOLITAN IMPROVEMENTS COMMISSION * STATE OF MASSACHUSETTS, 1911, PAGES 95-100-103.

BY R. P. BELLOWES AND R. W. GRAY ARCHITECTS.

·LIST·OF·DRAWINGS·

·DRAWINGS·PREPARED·IN·1910·FOR·THE·METROPOLITAN·IMPROVEMENT·LEAGUE·(NOS.·1·TO·5·INCLUSIVE·)
·AND·FOR·THE·JOINT·BOARD·ON·METROPOLITAN·IMPROVEMENTS·COMMISSION·STATE·OF·MASSACHUSETTS·(NO·6)

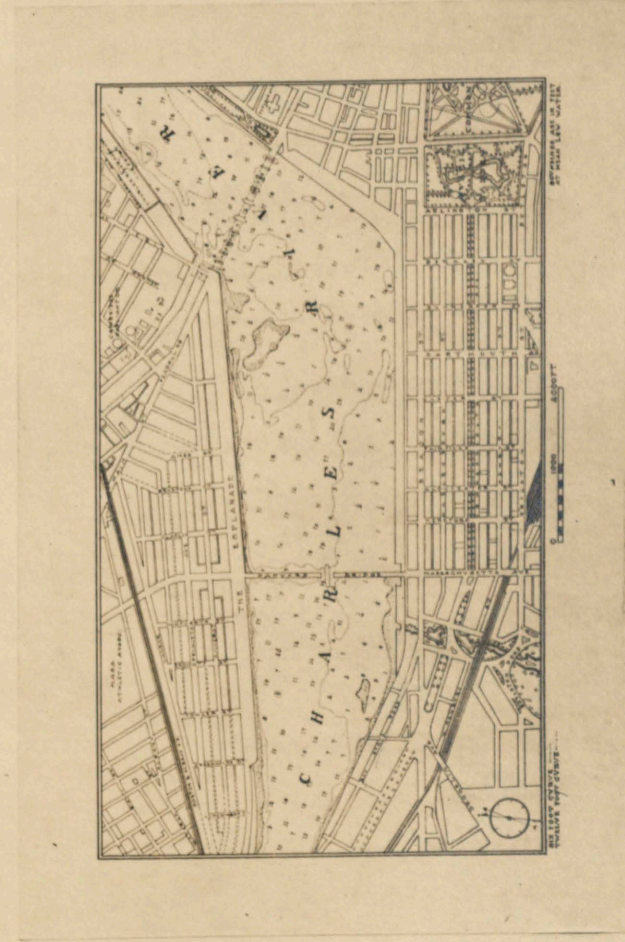
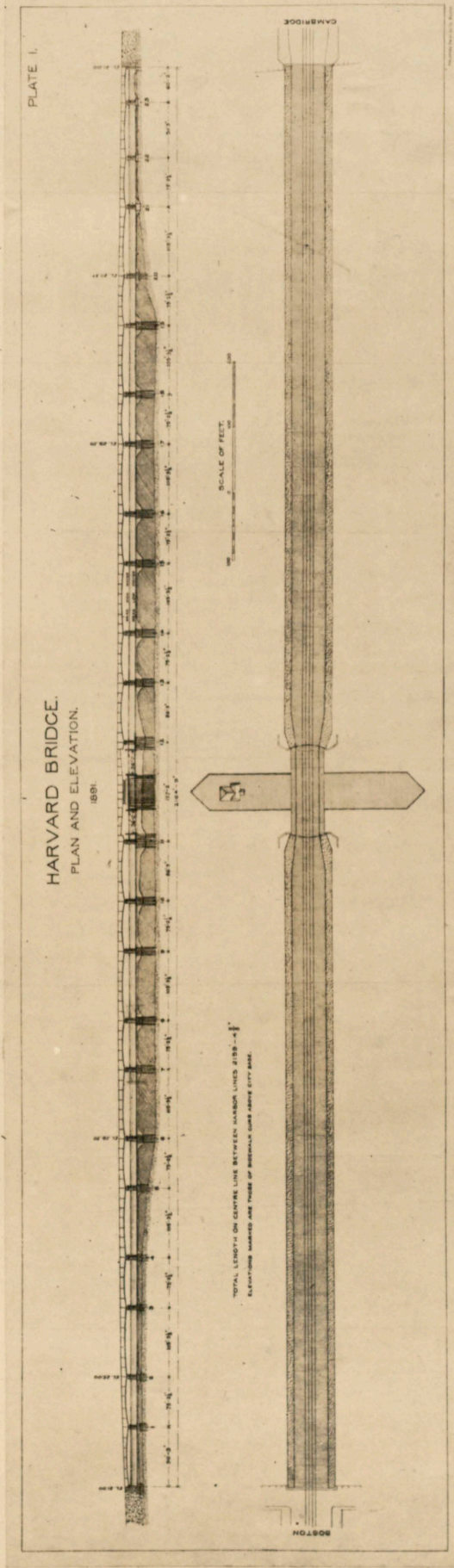
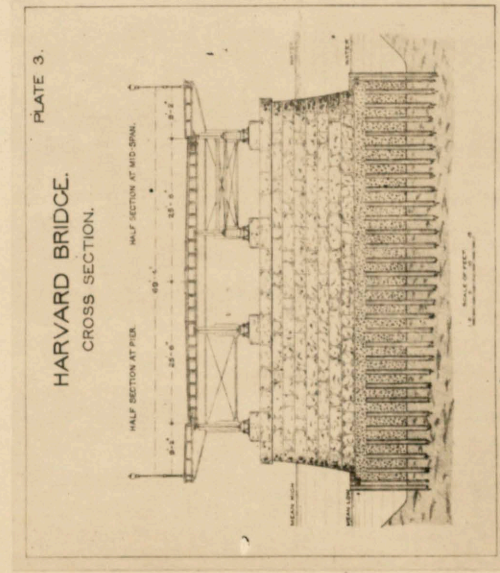
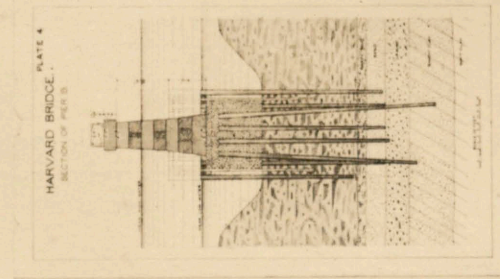
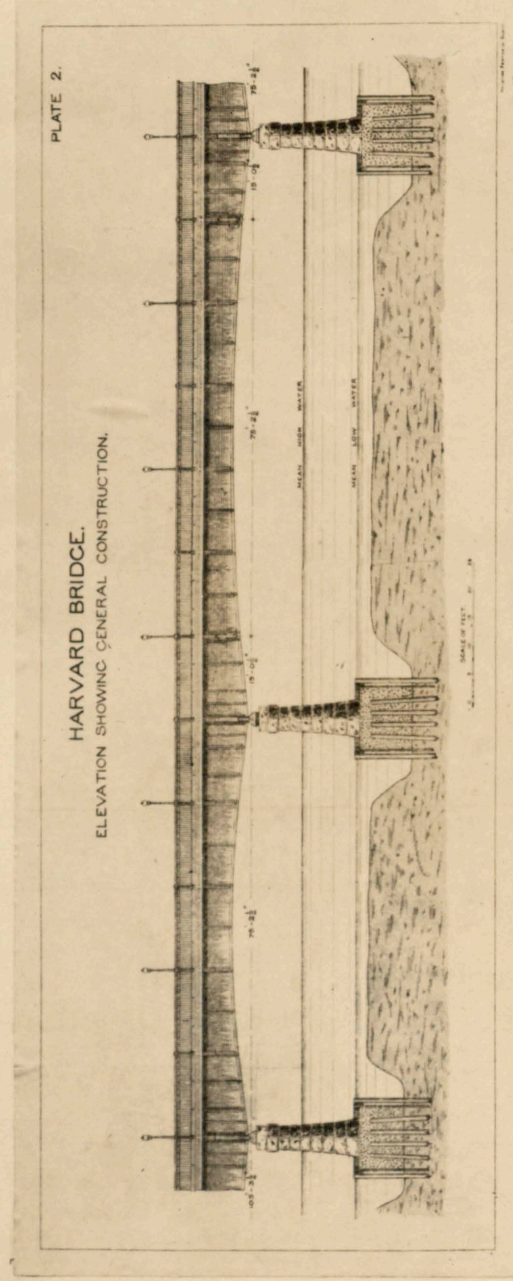
- 1· THE·PRESENT·HARVARD·BRIDGE·
- 2· RECONSTRUCTED·HARVARD·BRIDGE·
- 3· PERSPECTIVE·VIEWS·OF·THE·RECONSTRUCTED·BRIDGE·
- 4· PICTURES·OF·BRIDGES·SIMILAR·TO·THE·PROPOSED·BRIDGE·
- 5· SCHEMES·BEARING·ON·THE·FUTURE·DEVELOPMENT·OF·THE·BASIN·
- 6· PROPOSED·ISLAND·IN·CHARLES·RIVER·BASIN·

·DRAWINGS·OF·THE·RECONSTRUCTION·OF·HARVARD·BRIDGE·SUPERSEDING·
·THE·EARLIER·SCHEME·AND·INCORPORATING·THE·WAR·MEMORIAL·

- 1· THE·PRESENT·HARVARD·BRIDGE·
- 2· RECONSTRUCTED·HARVARD·BRIDGE·
- 3· PLAN·OF·THE·WAR·MEMORIAL·AT·THE·BOSTON·END·OF·THE·BRIDGE·
- 4· ELEVATION·OF·THE·WAR·MEMORIAL·FROM·THE·RIVER·
- FRONTISPIECE· PERSPECTIVE·OF·THE·WAR·MEMORIAL·

PROPOSED RECONSTRUCTION OF HARVARD BRIDGE

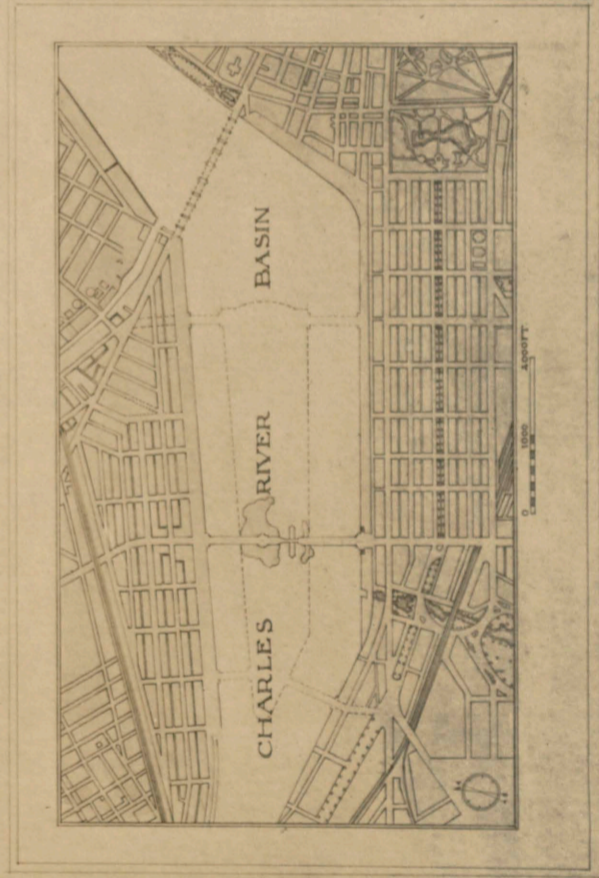
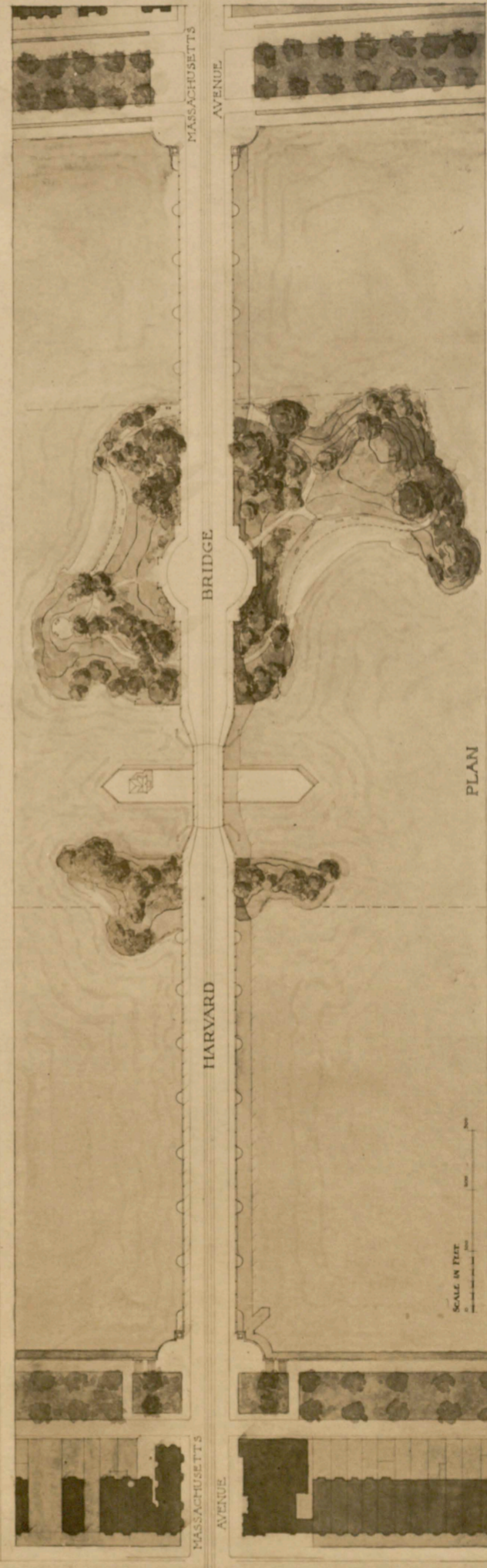
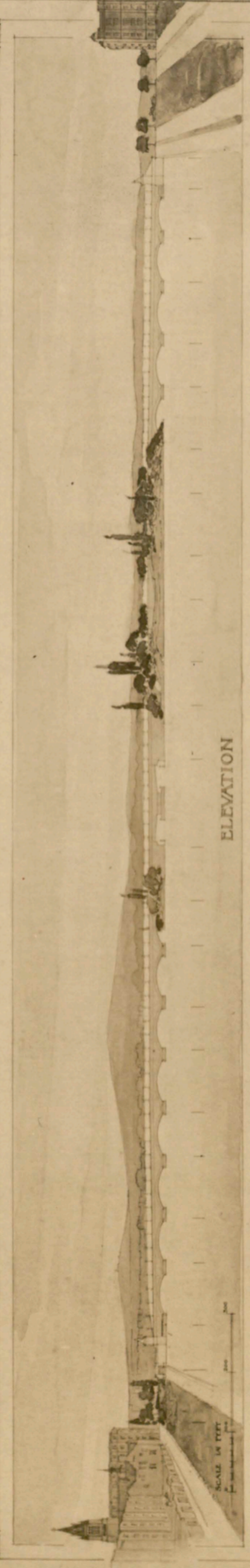
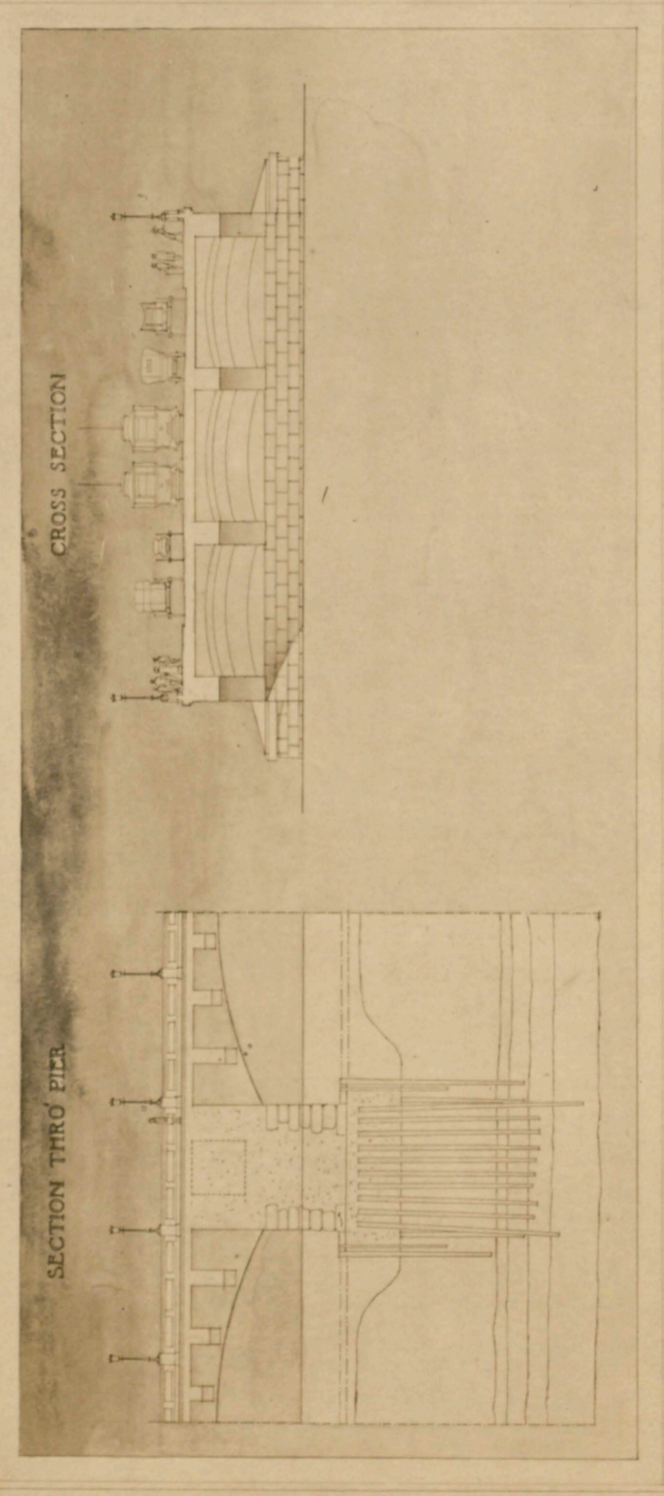
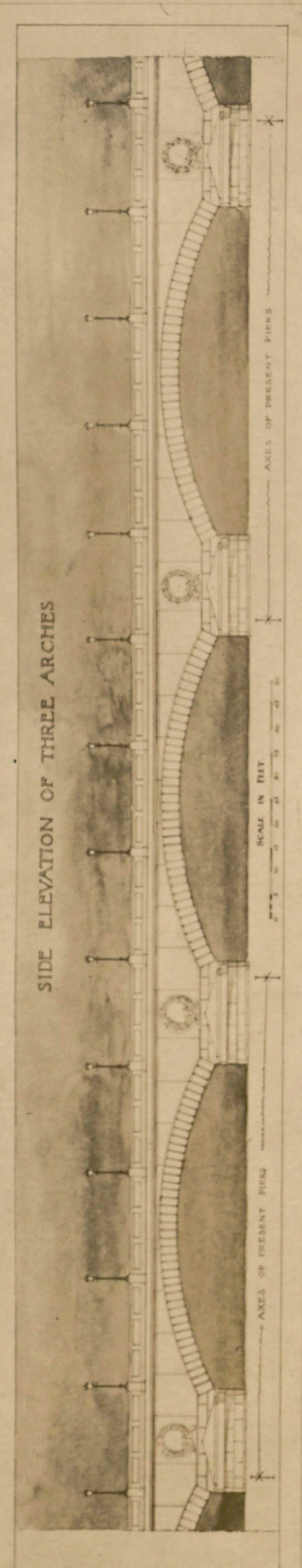
THE PRESENT HARVARD BRIDGE



- METROPOLITAN IMPROVEMENT LEAGUE -
ROBERT W. BELLAMY AND FRANKLIN GORIN, ARCHITECTS,
8 BEACON STREET, BOSTON, U.S.A.

PROPOSED RECONSTRUCTION OF HARVARD BRIDGE

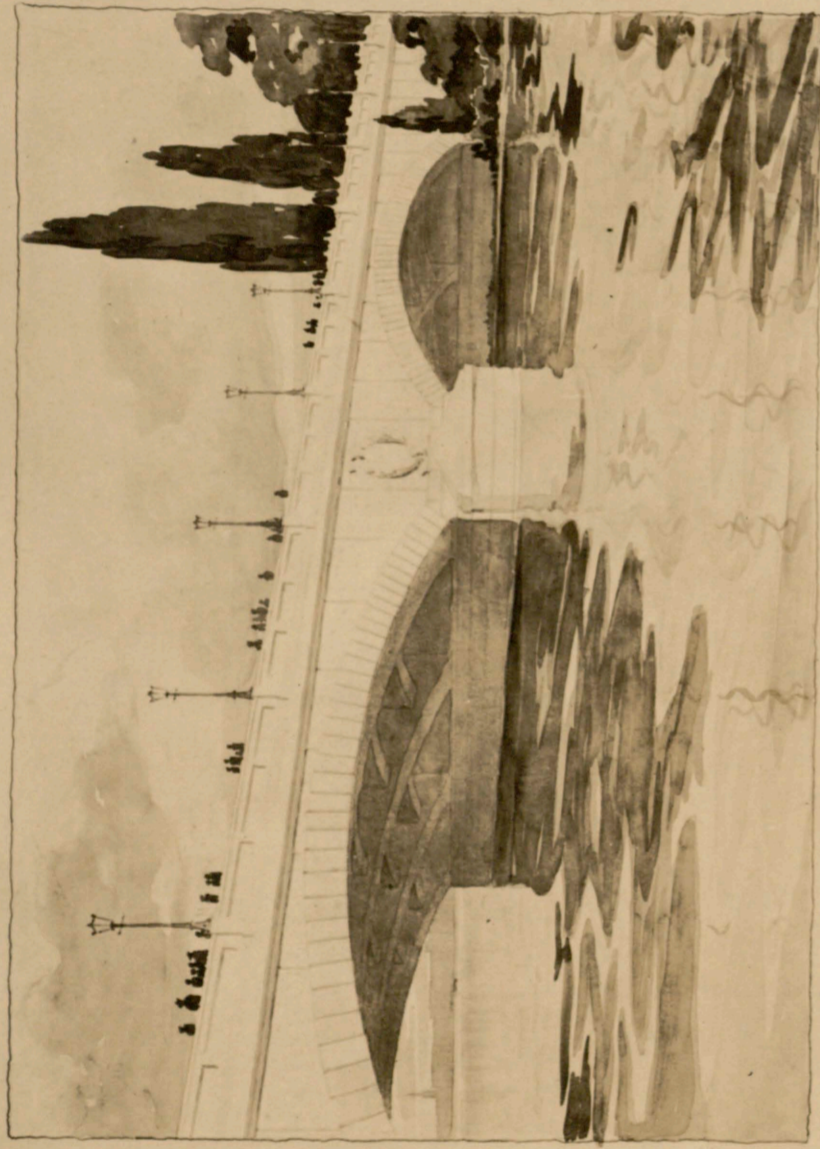
RECONSTRUCTED HARVARD BRIDGE



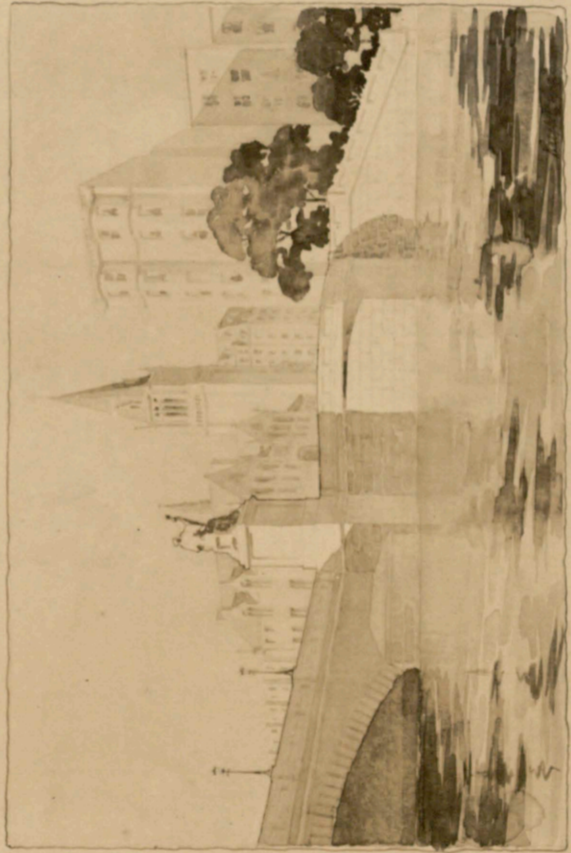
MAP OF BASIN SHOWING PROPOSED CHANGES
SUGGESTED FUTURE DEVELOPMENT OF
BASIN SHOWN BY DOTTED LINES

"METROPOLITAN-IMPROVEMENT-LEAGUE"
ROBERT F. BELLOWES AND RALPH W. GRAY, ARCHITECTS,
6 BEACON STREET, BOSTON - FEB. 19 1901.

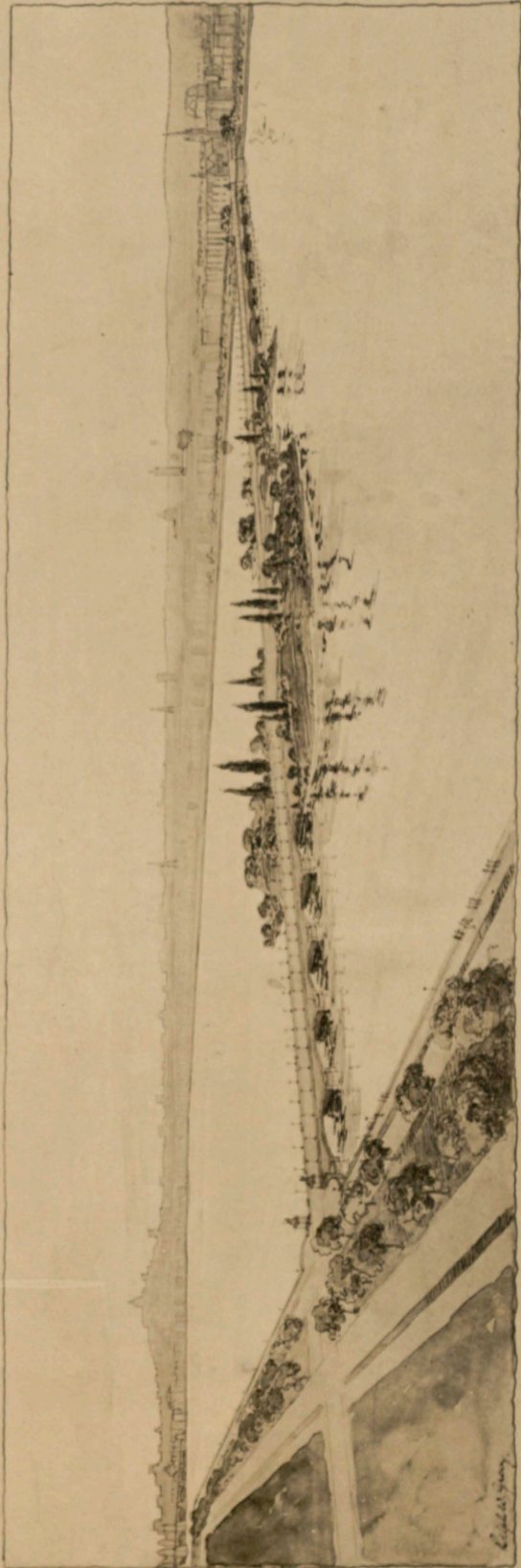
PROPOSED RECONSTRUCTION OF HARVARD BRIDGE



-ARCHES - NEAR - CAUSEWAY-



-THE - BOSTON - END -



-BIRD'S - EYE - VIEW - OF - BASIN -
-SHOWING - BRIDGE - AND - CAUSEWAY-

- METROPOLITAN - IMPROVEMENT - LEAGUE -
ROBERT W. BELLONS AND SALERIE M. GRAY, ARCHITECTS.
8 SEASON STREET, BOSTON, FEB. 12, 1904.

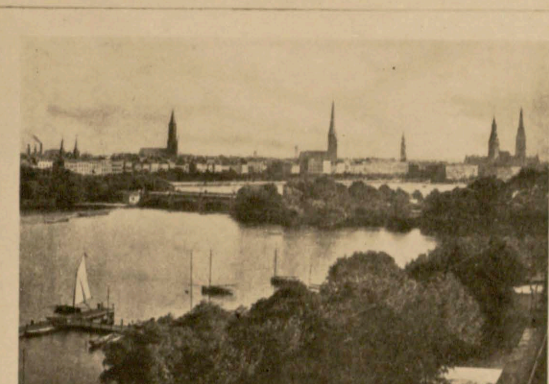
- PROPOSED - RECONSTRUCTION - OF - HARVARD - BRIDGE -



· GENEVA ·



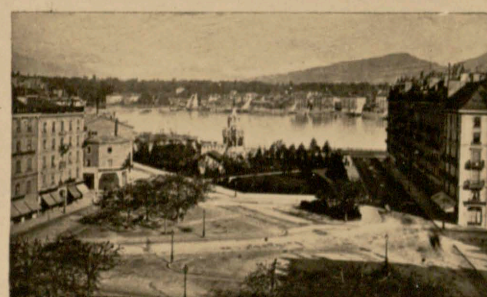
· PARIS ·



· HAMBURG ·



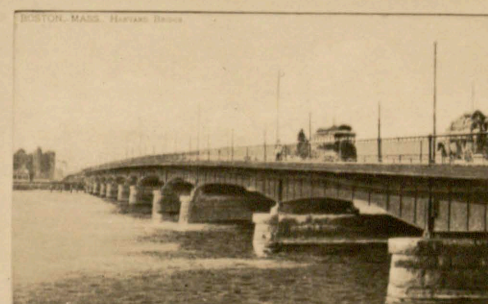
· PRAGUE ·



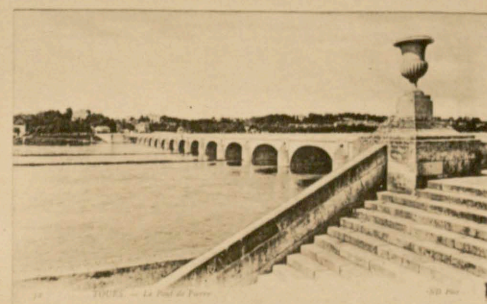
· GENEVA ·

- METROPOLITAN - IMPROVEMENT -
- LEAGUE -

ROBERT P. BELLOWS AND RALPH W. GRAY, ARCHITECTS.
6 BEACON STREET, BOSTON · FEB. 13 1910.



· PRESENT · HARVARD · BRIDGE ·

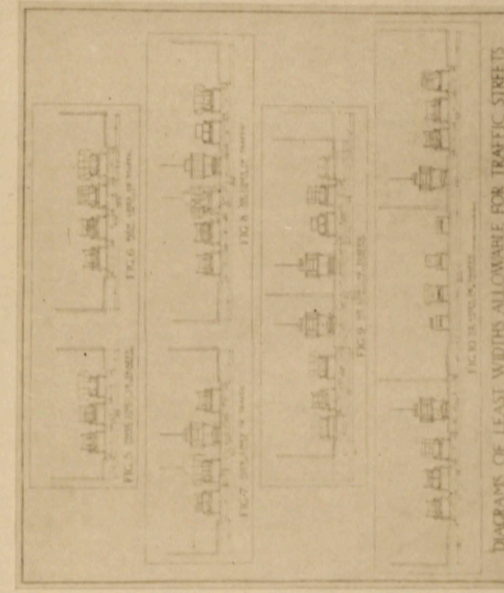
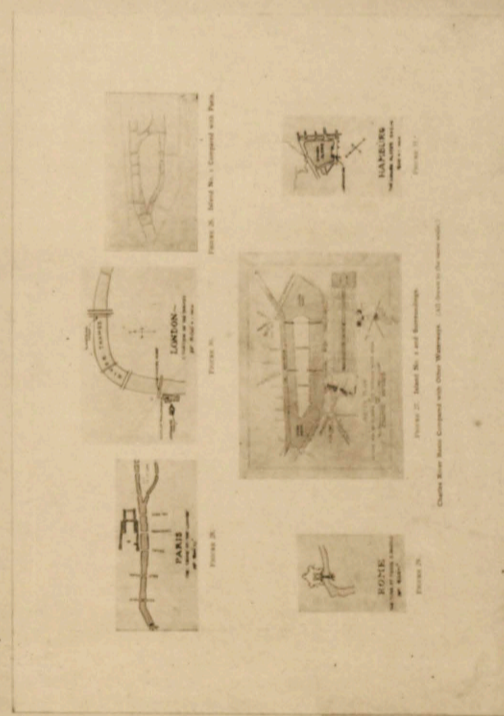
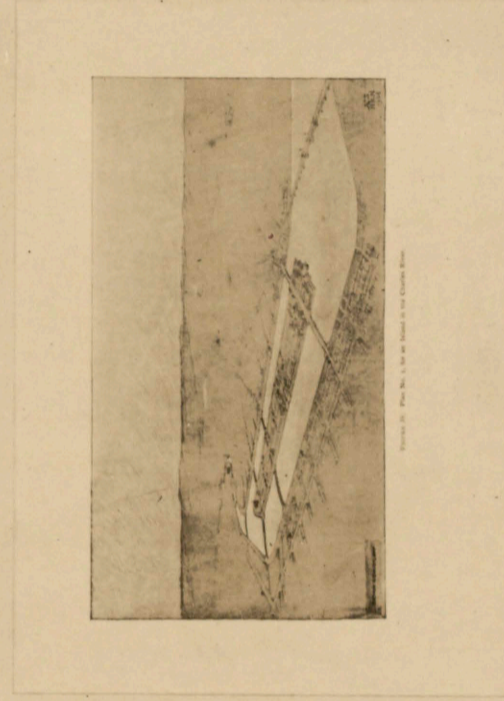
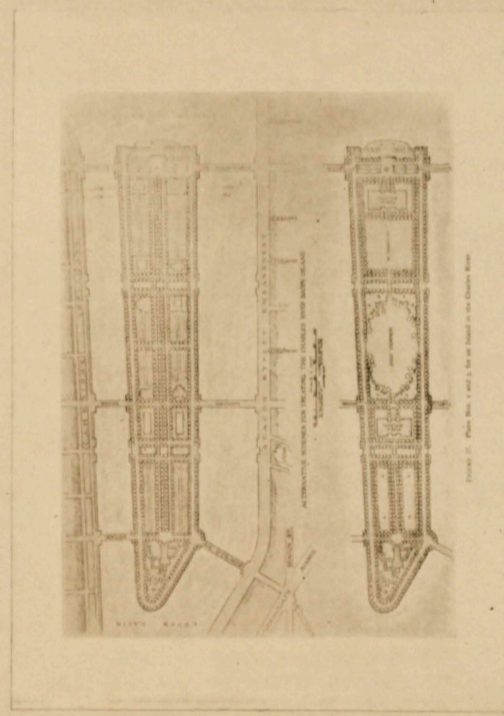
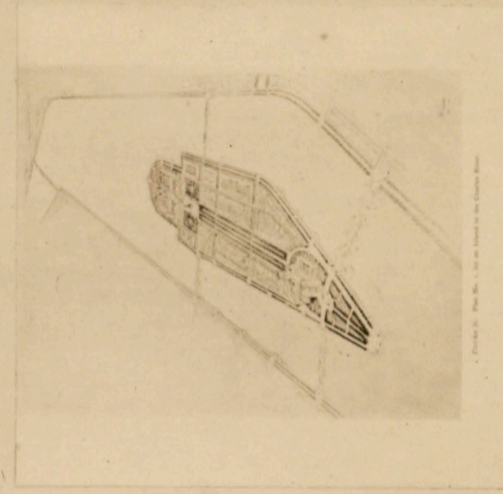
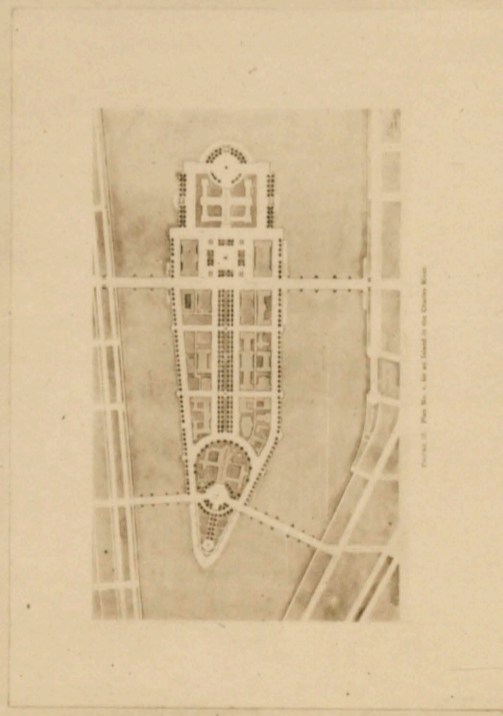
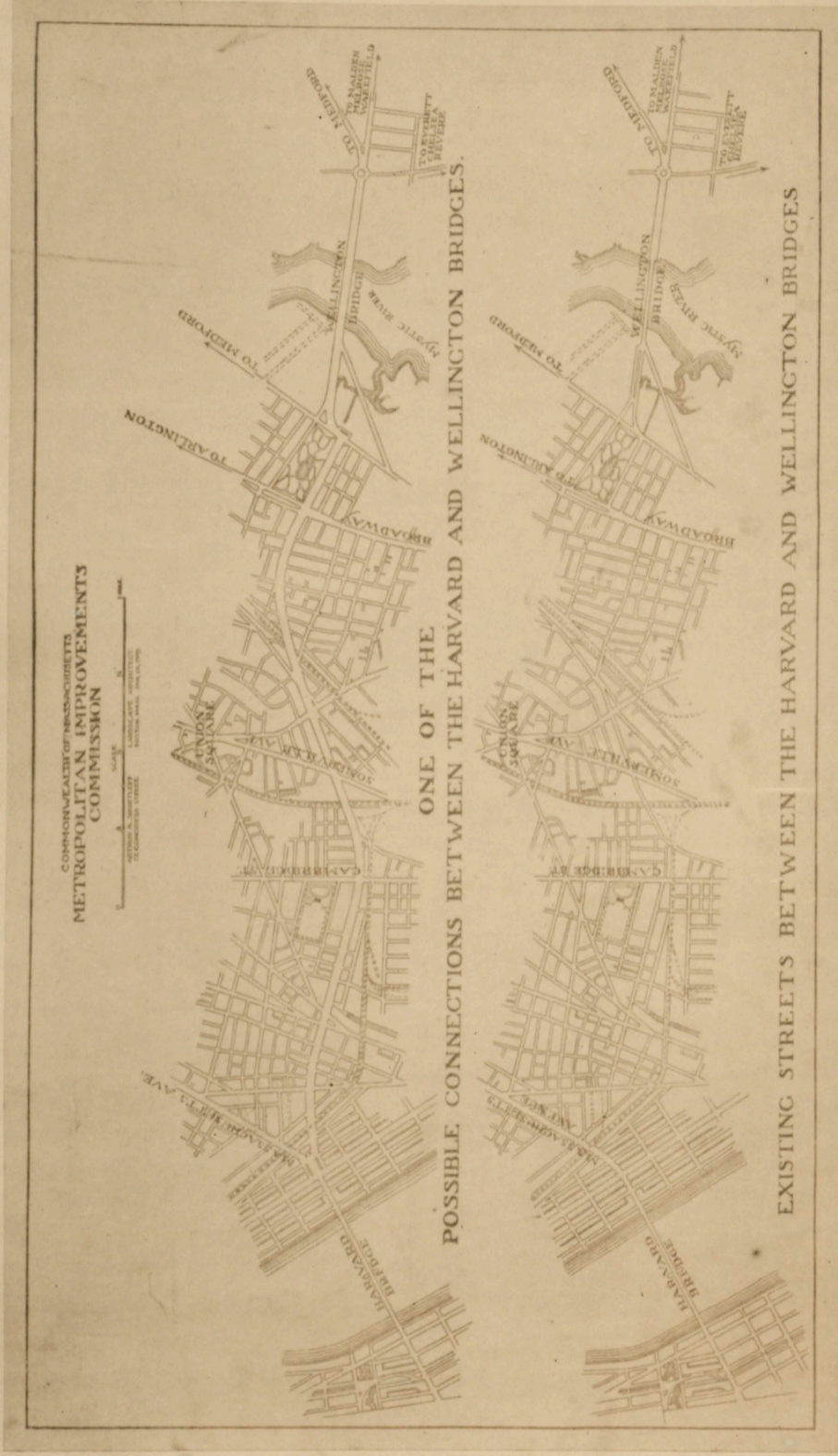


· TOURS ·

- PICTURES - OF - BRIDGES -
- SIMILAR - TO -
- THE - PROPOSED - BRIDGE -

- PROPOSED RECONSTRUCTION - OF - HARVARD - BRIDGE -

SCHEMES BEARING ON THE FUTURE DEVELOPMENT
OF THE BASIN
SUBMITTED BY THE BOSTON SOCIETY OF ARCHITECTS
AND
THE METROPOLITAN IMPROVEMENTS COMMISSION
IN THEIR REPORTS



METROPOLITAN IMPROVEMENT LEAGUE.
ROBERT F. BELLINGS AND BALDWIN W. GRAY, ARCHITECTS,
8 BEACON STREET, BOSTON, FEB. 15, 1900.

- PROPOSED - ISLAND -
- IN - CHARLES - RIVER - BASIN -
BOSTON MASS

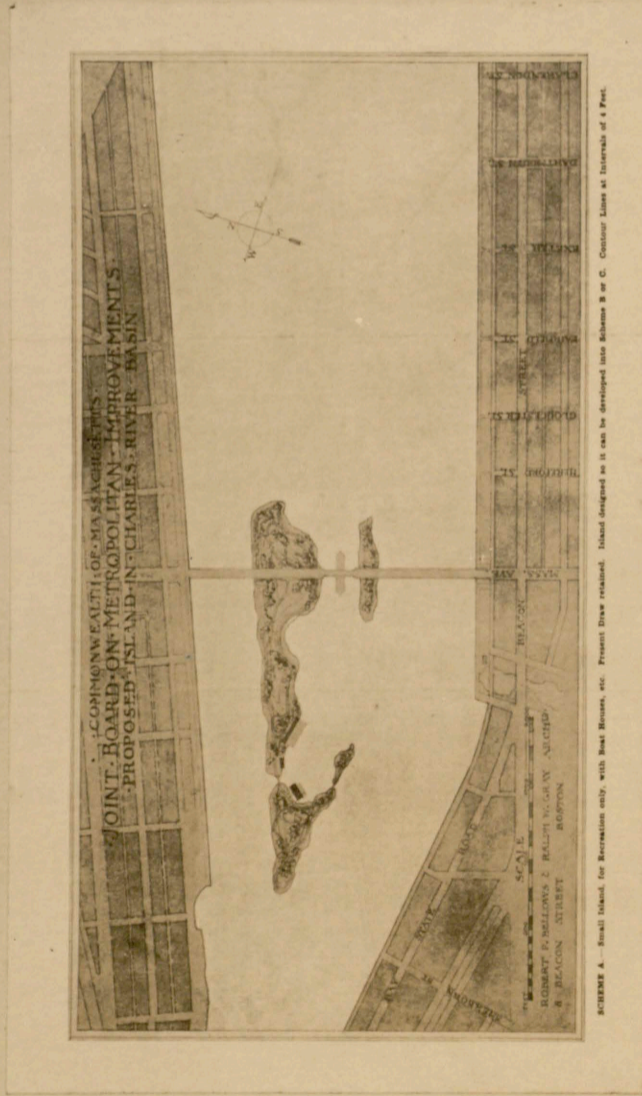


FIGURE 1. Small Island, for information only, with the Boston, etc. Project. Based on a plan by the Massachusetts State Engineer, 1870. (Boston, Mass., 1870.)

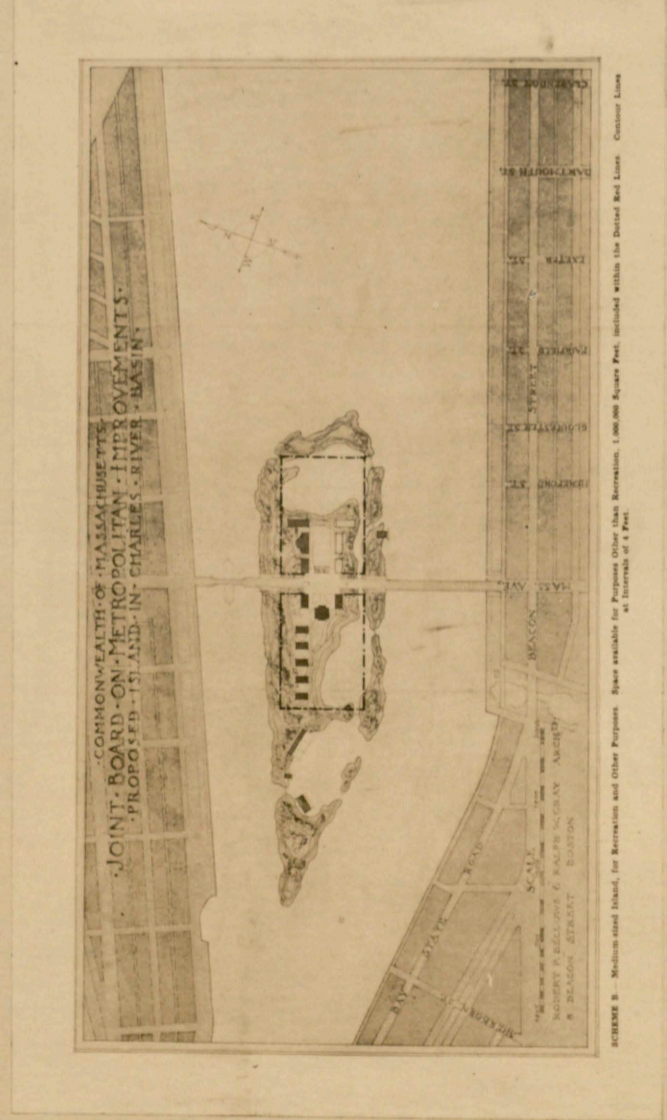


FIGURE 2. Medium-sized Island, for information and other purposes. Based on a plan by the Massachusetts State Engineer, 1870. (Boston, Mass., 1870.)

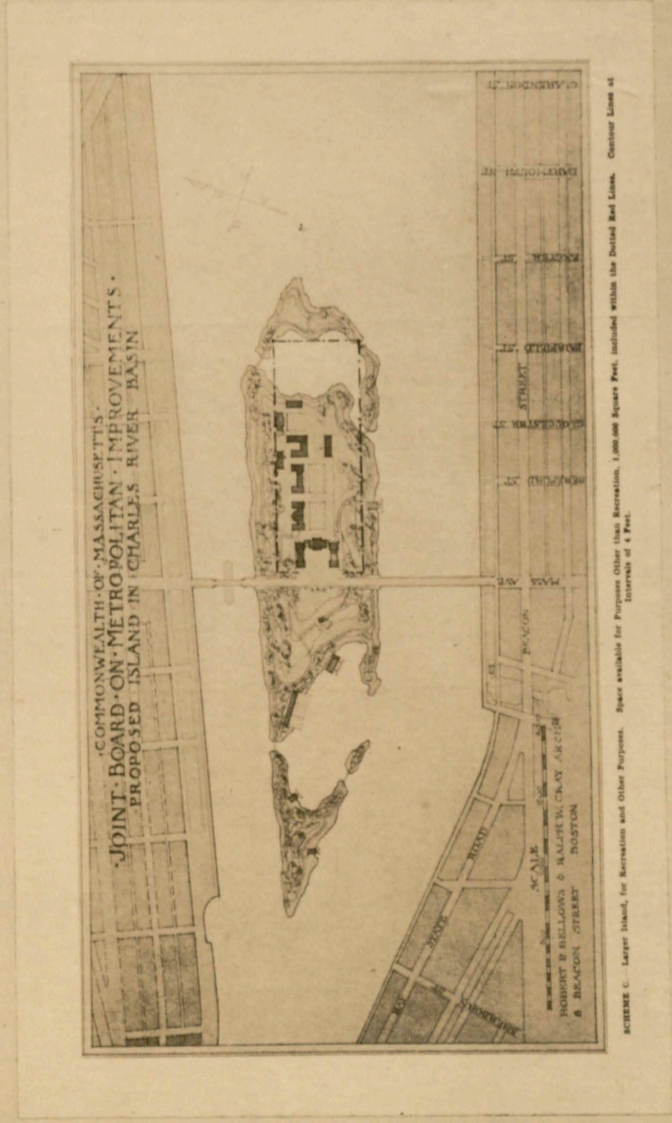


FIGURE 3. Larger Island, for information and other purposes. Based on a plan by the Massachusetts State Engineer, 1870. (Boston, Mass., 1870.)

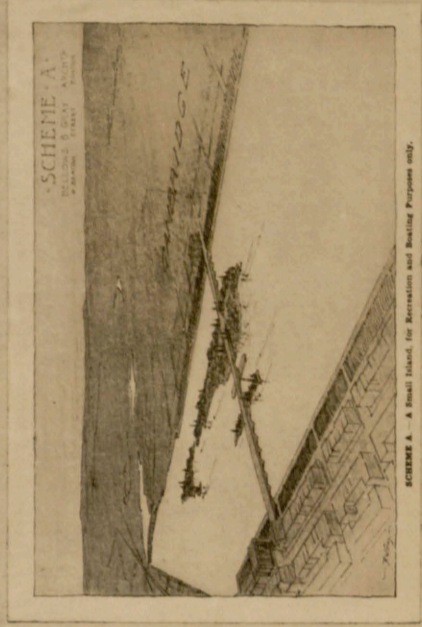


FIGURE 4. Aerial view of the island, for information and other purposes.

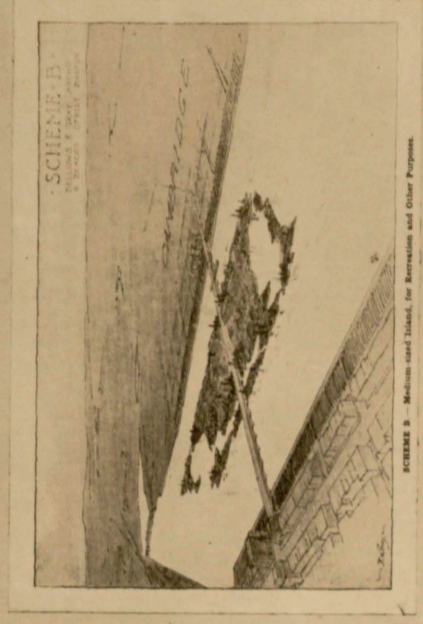


FIGURE 5. Aerial view of the island, for information and other purposes.

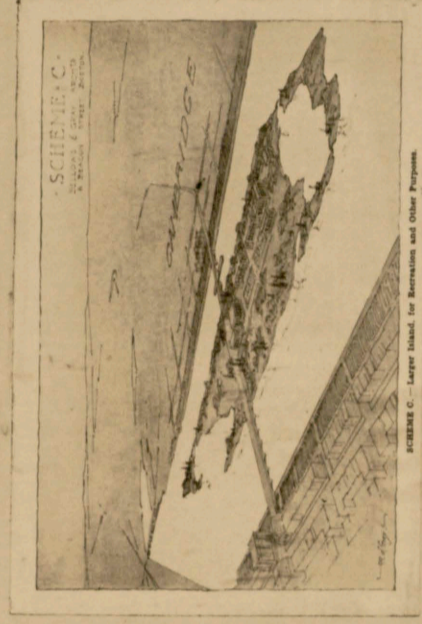
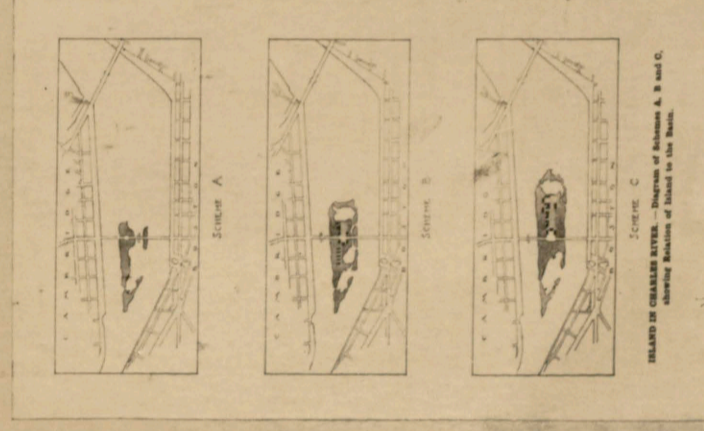


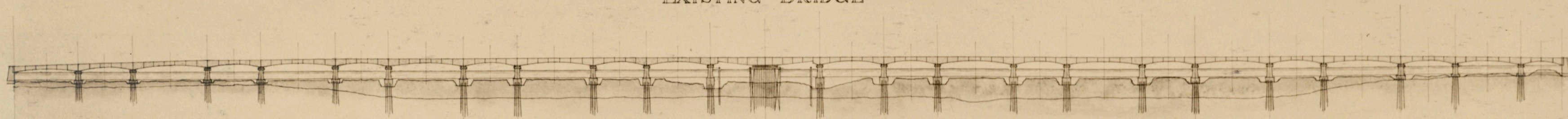
FIGURE 6. Aerial view of the island, for information and other purposes.



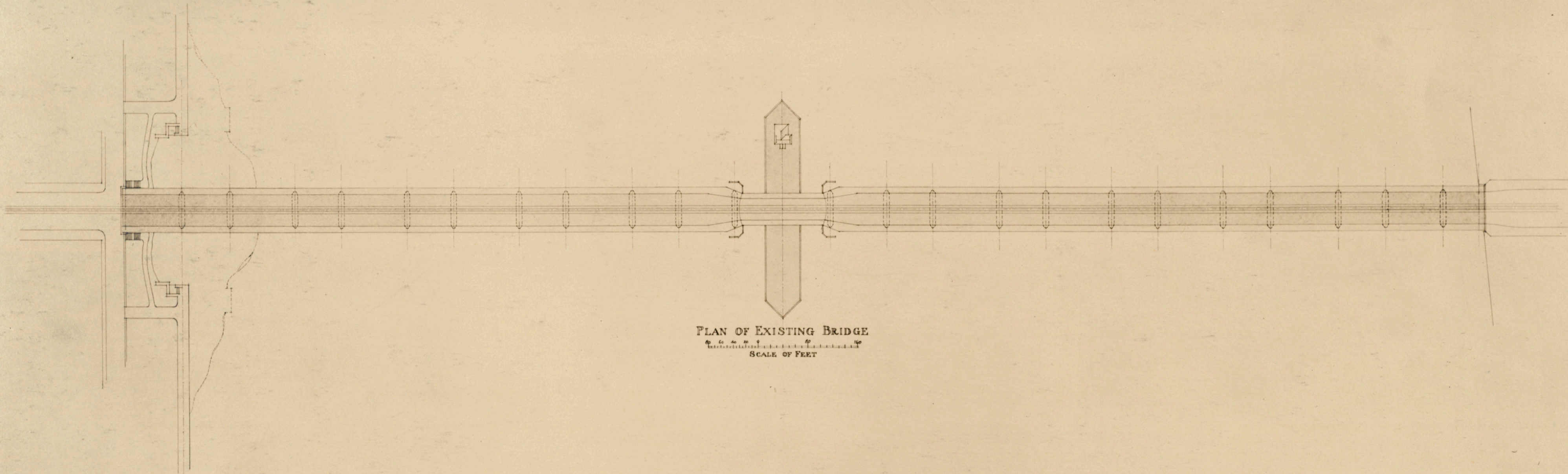
FIGURES 7, 8, and 9. Views of the island, for information and other purposes.

THIS ISLAND IS TO BE USED AS A PLACE FOR THE STORAGE OF THE BATTERIES OF THE METROPOLITAN LIGHTHOUSE SYSTEM, AND AS A PLACE FOR THE STORAGE OF THE BATTERIES OF THE METROPOLITAN LIGHTHOUSE SYSTEM, AND AS A PLACE FOR THE STORAGE OF THE BATTERIES OF THE METROPOLITAN LIGHTHOUSE SYSTEM.

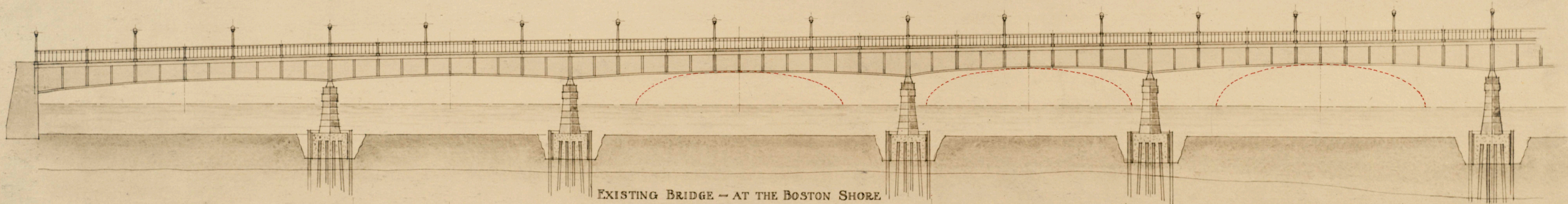
PROPOSED
RECONSTRUCTION OF THE HARVARD BRIDGE
EXISTING BRIDGE



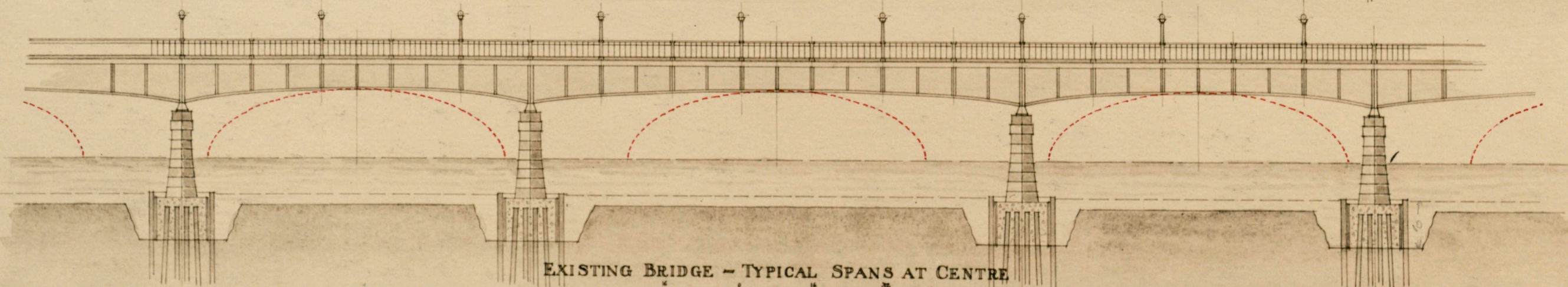
ELEVATION OF EXISTING BRIDGE



PLAN OF EXISTING BRIDGE
SCALE OF FEET



EXISTING BRIDGE - AT THE BOSTON SHORE



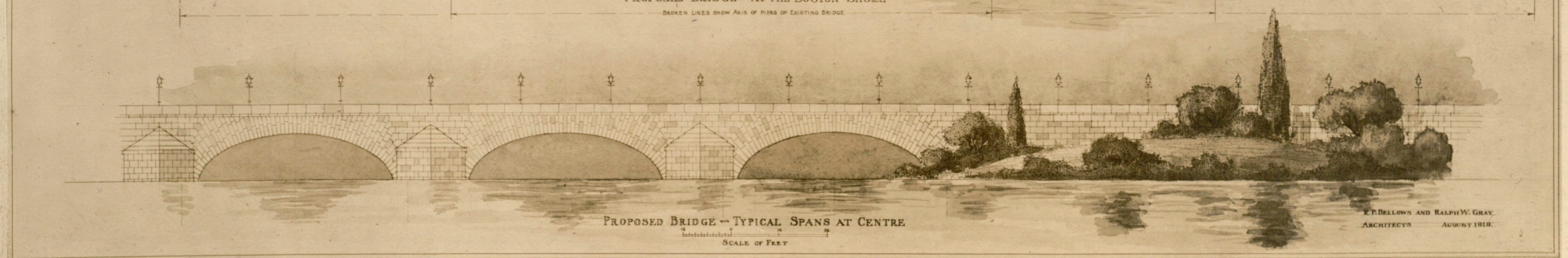
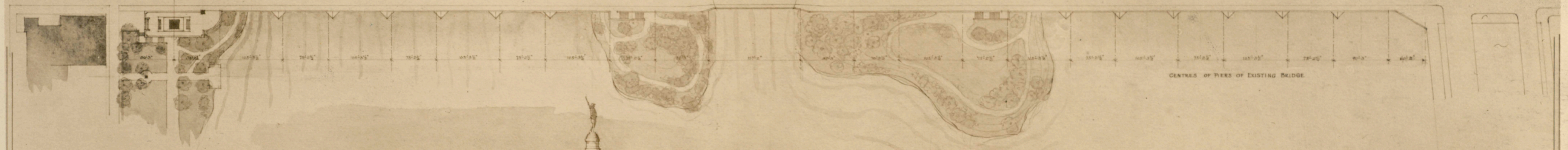
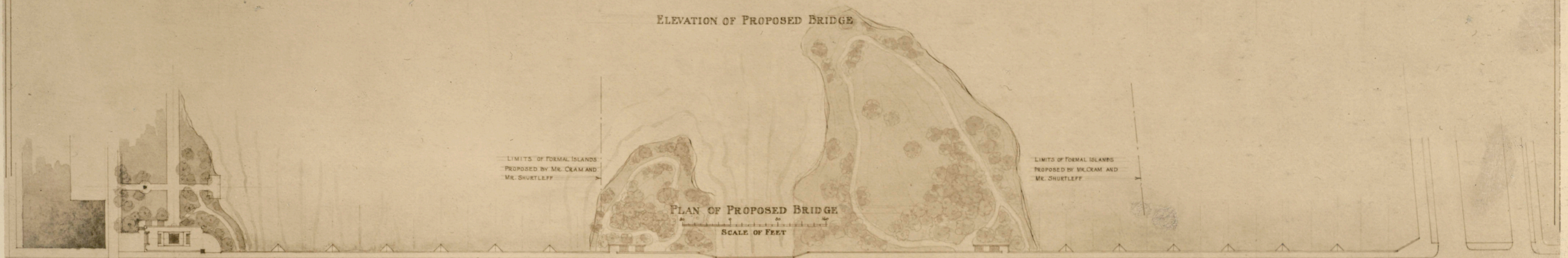
EXISTING BRIDGE - TYPICAL SPANS AT CENTRE
SCALE OF FEET

R. P. BELLOWS AND RALPH W. GRAY
ARCHITECTS AUGUST 1910

PROPOSED
RECONSTRUCTION OF THE HARVARD BRIDGE
PROPOSED BRIDGE

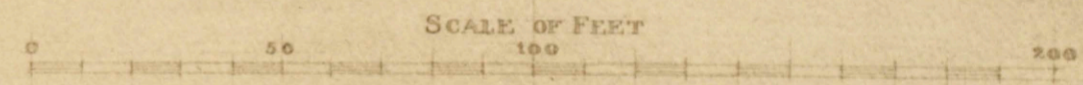
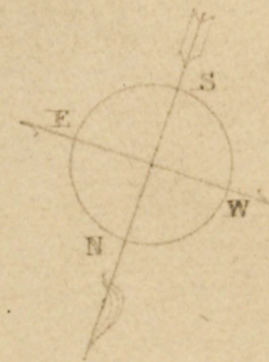
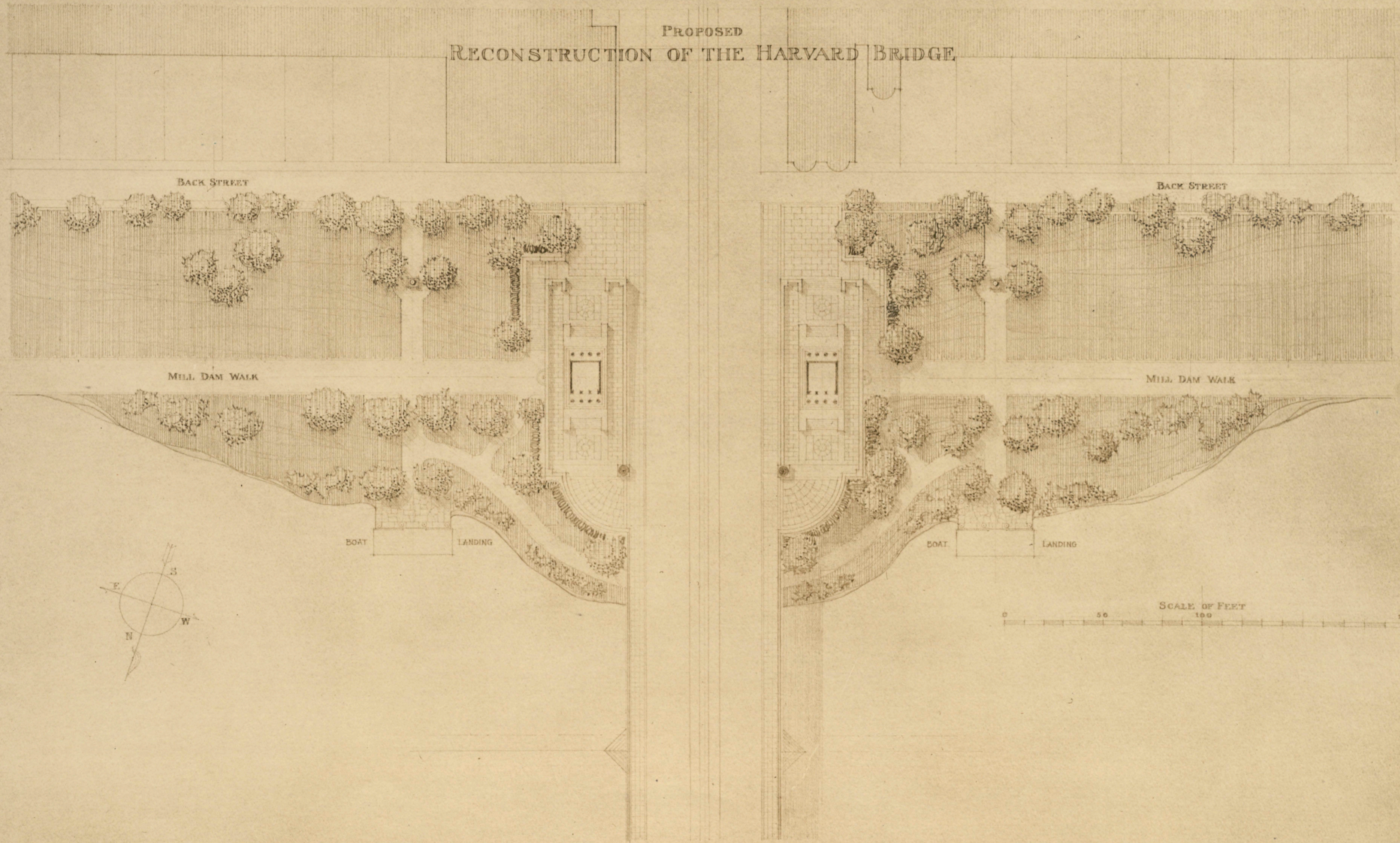


ELEVATION OF PROPOSED BRIDGE

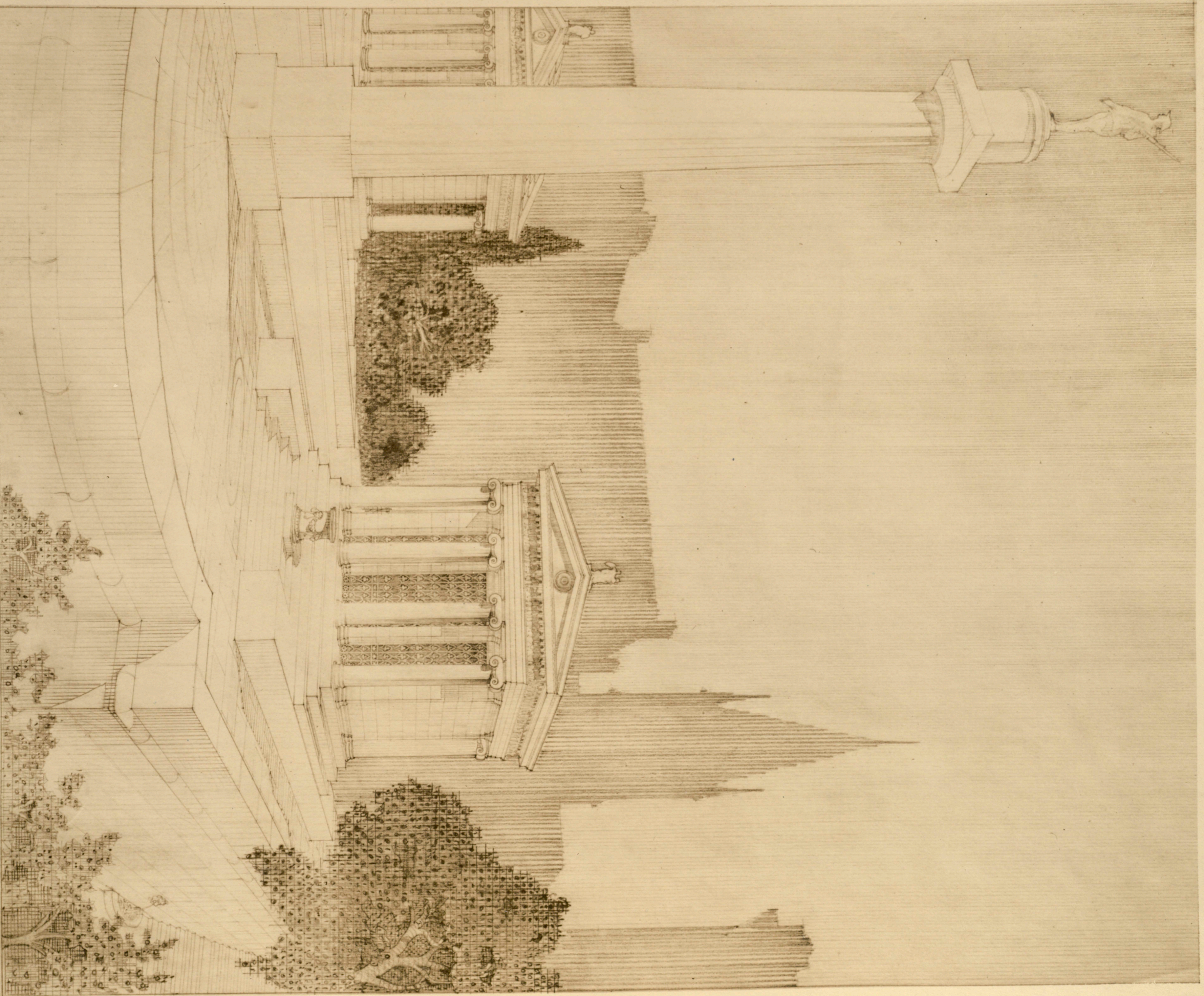


R. F. BELLOWS AND RALPH W. GRAY
ARCHITECTS
AUGUST 1912.

PROPOSED
RECONSTRUCTION OF THE HARVARD BRIDGE



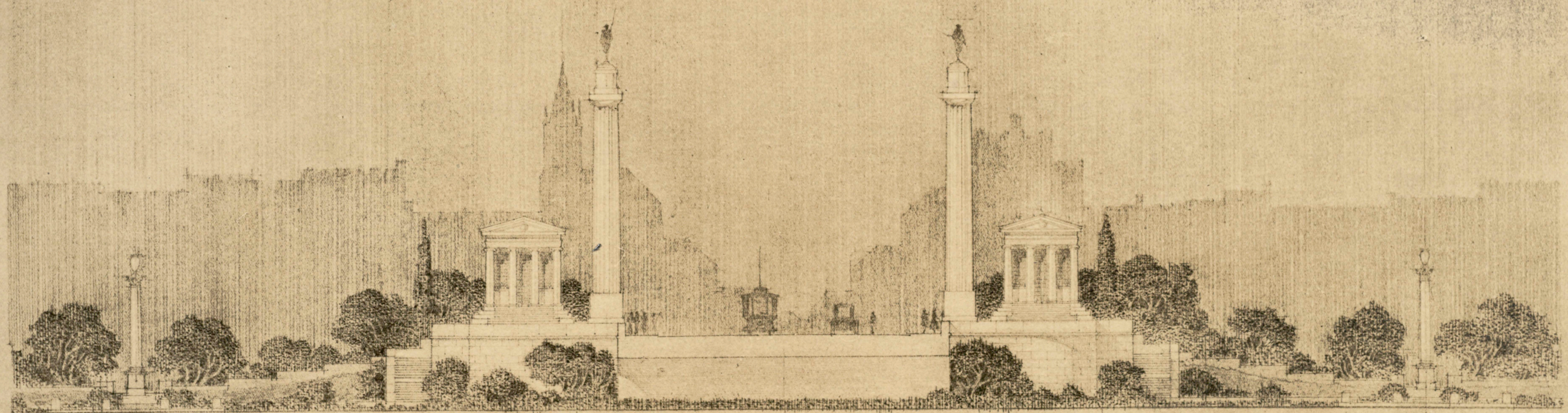
PROPOSED BRIDGE AT THE BOSTON SHORE
SHOWING WAR MEMORIAL BUILDINGS



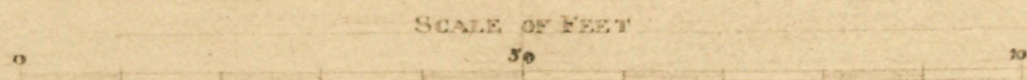
WAR MEMORIAL.

E. BELLOWS AND RALPH W. GRAY
ARCHITECTS
AUGUST 1919.

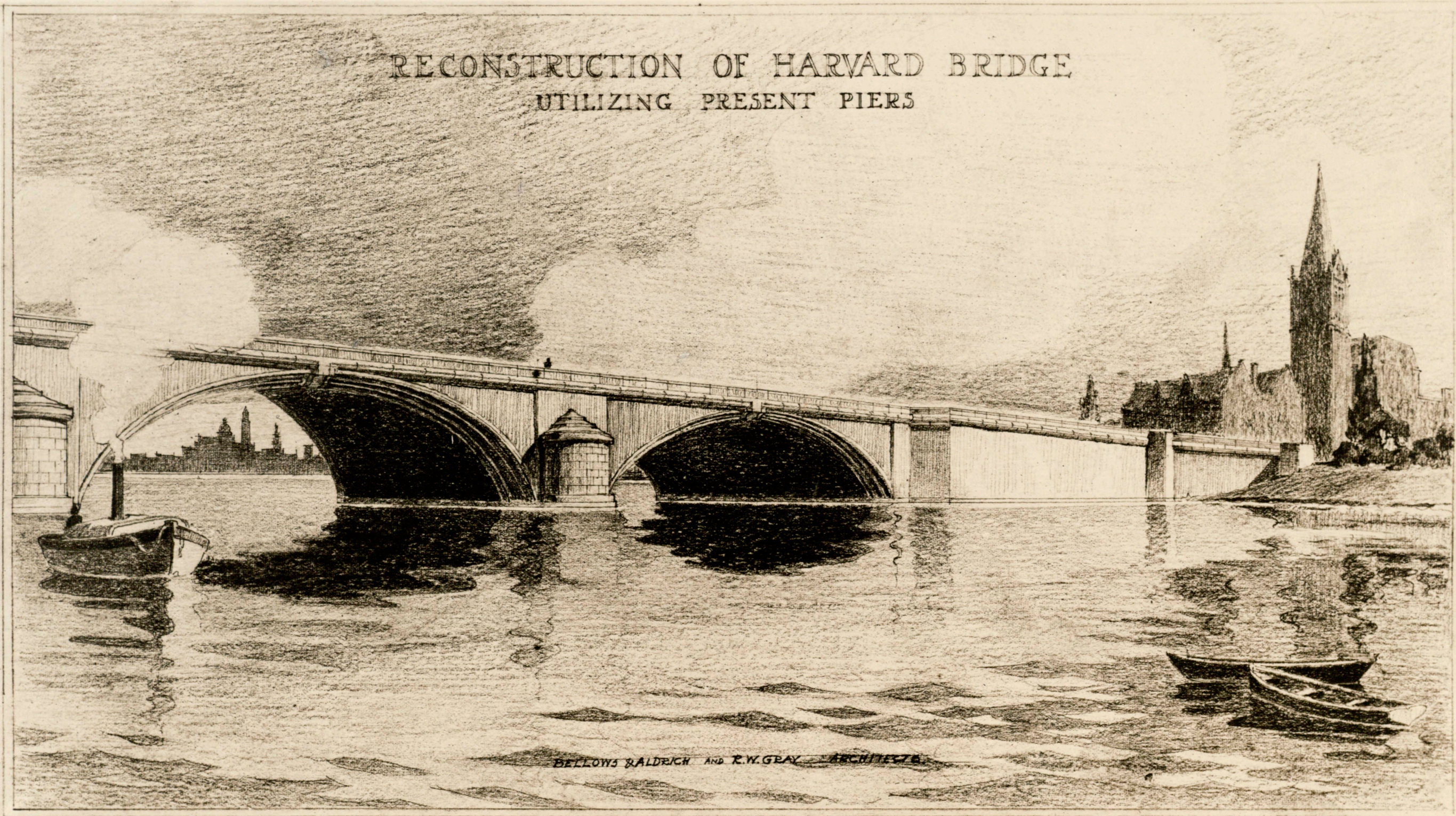
PROPOSED
RECONSTRUCTION OF THE HARVARD BRIDGE.



PROPOSED BRIDGE AT THE BOSTON SHORE
SHOWING WAR MEMORIAL BUILDINGS

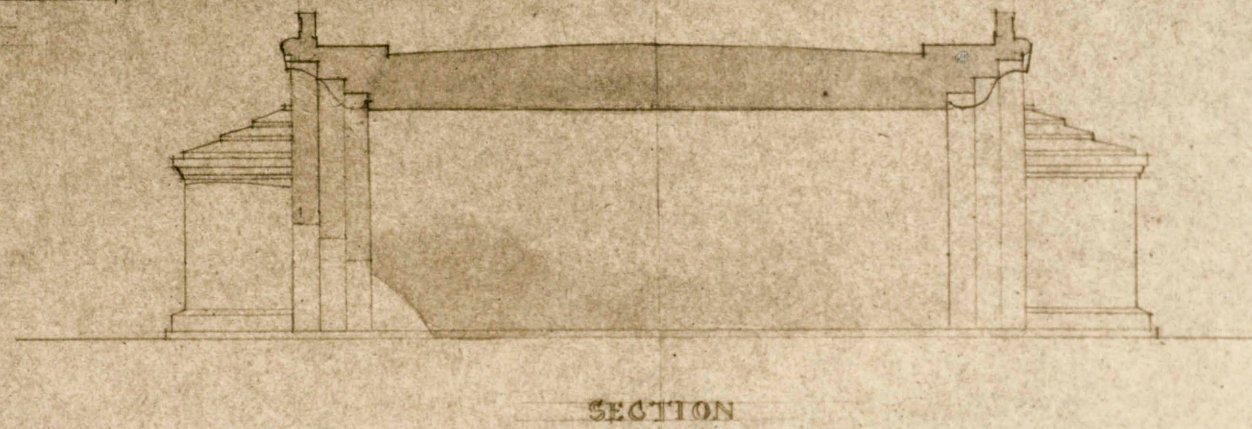
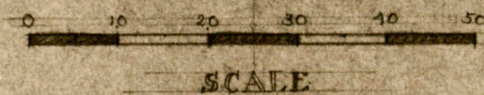
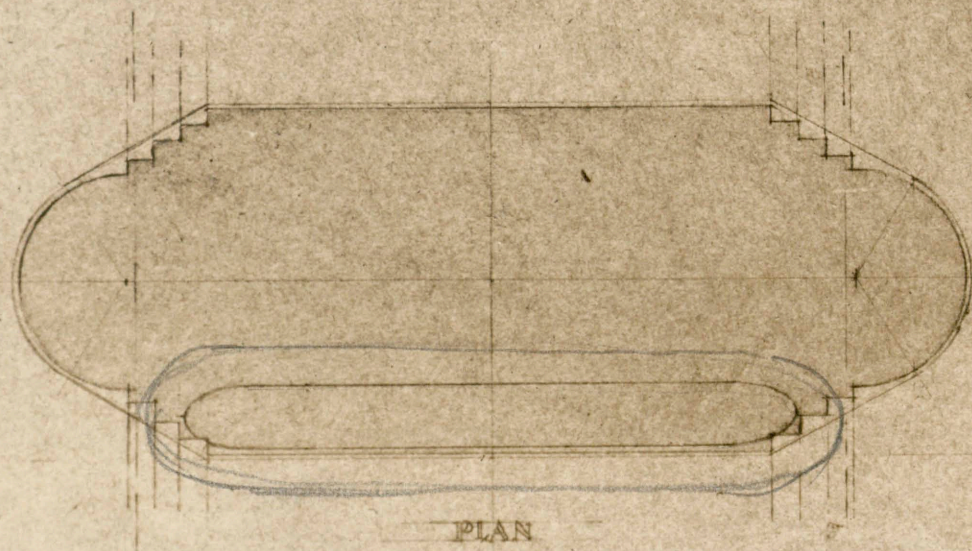
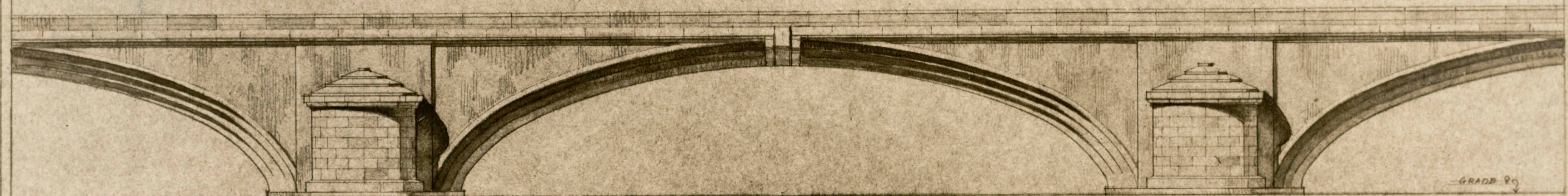


RECONSTRUCTION OF HARVARD BRIDGE
UTILIZING PRESENT PIERS



BELLOWS BALDRICH AND E.W. GRAY ARCHTTS

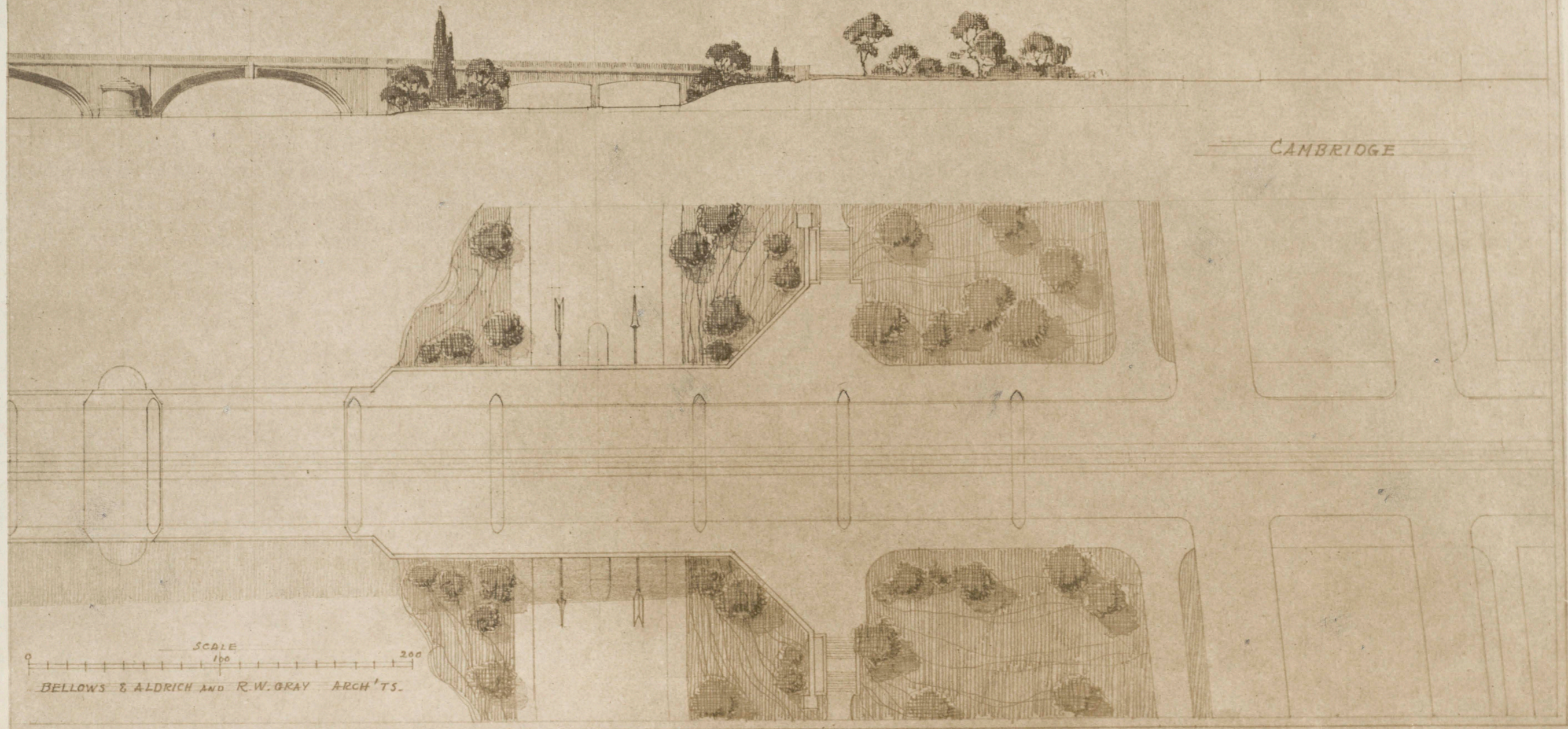
RECONSTRUCTION OF HARVARD BRIDGE
UTILIZING PRESENT PIERS



FELLOWS & ALDRICH AND E. W. GRAY, ARCHITECTS

RECONSTRUCTION OF HARVARD BRIDGE
UTILIZING PRESENT PIERS

- STUDY OF UNDERPASS ON CAMBRIDGE SIDE -



SCALE
0 100 200
BELLOWS & ALDRICH AND R.W. GRAY ARCH'TS.