

666

Drawings and watercolors by Lois Lilly Howe, 1933-1936



Ref. File

the bottle
Guswold



Boat Club

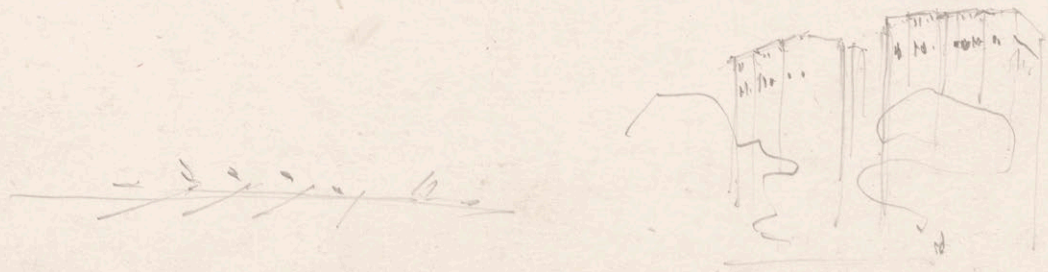
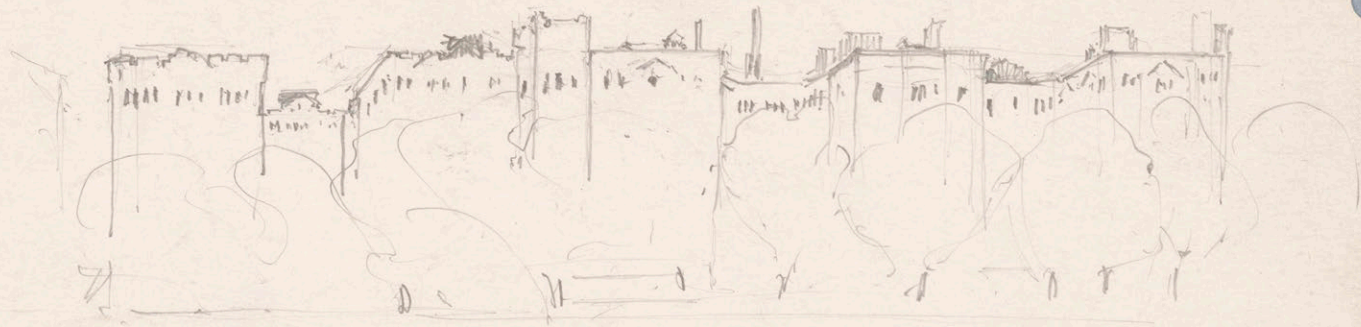


Stillman Infirmary -



Dalby House -
April 8, 1933

mc9:646



Apartments on Memorial Drive, April 8, 1933.

MC 9: 606



Sketch

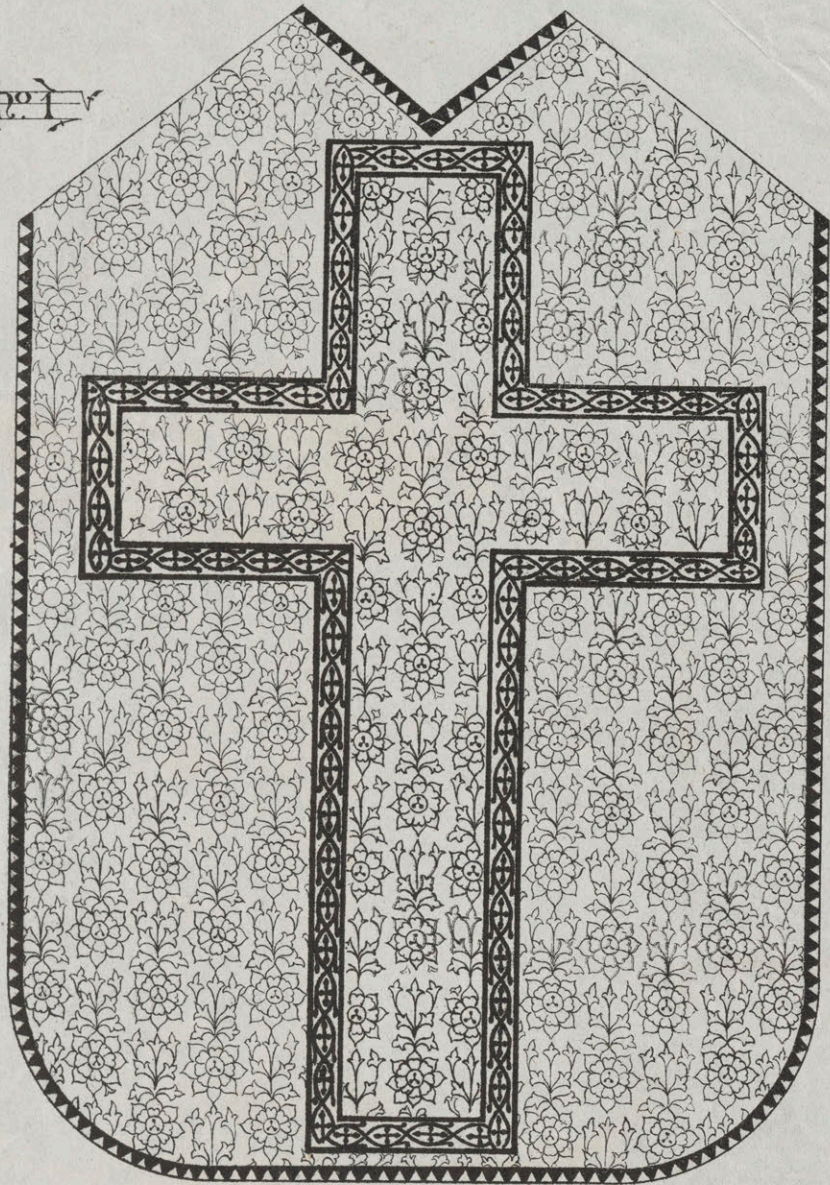




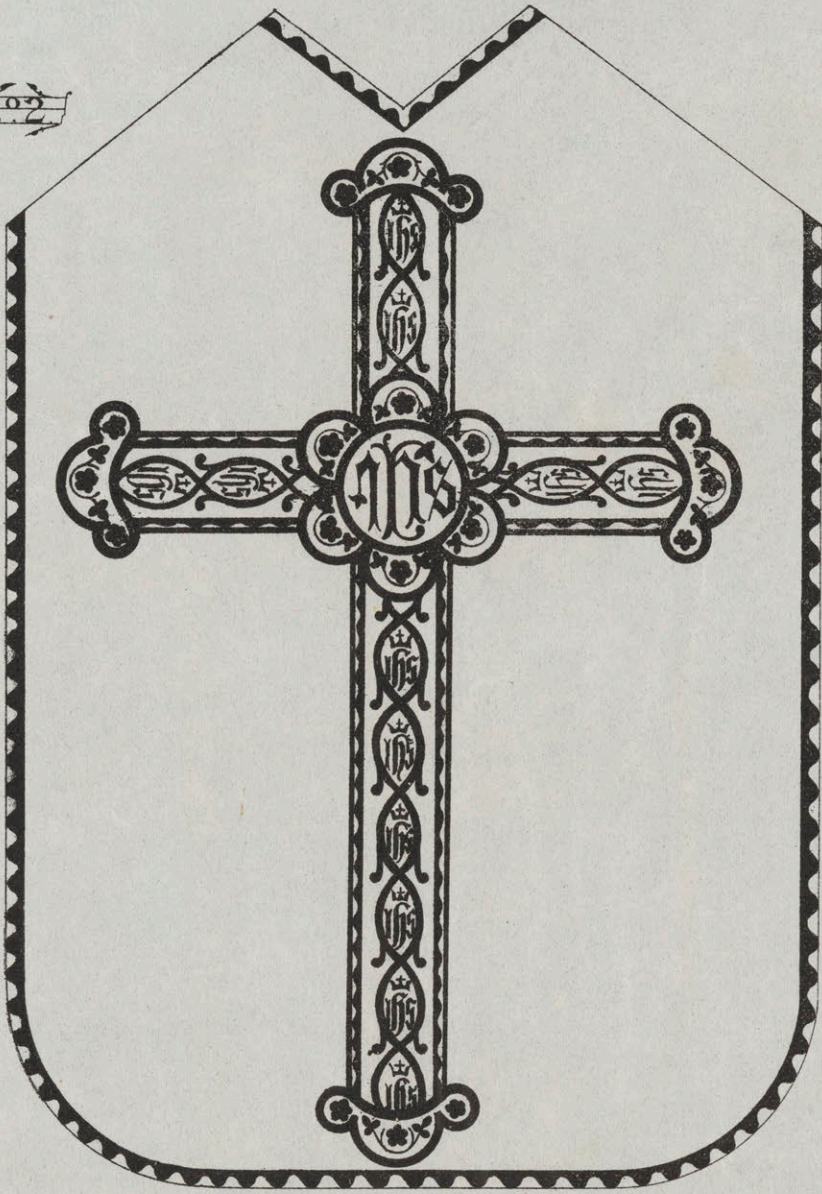
Vegalay. June 30, 1934.



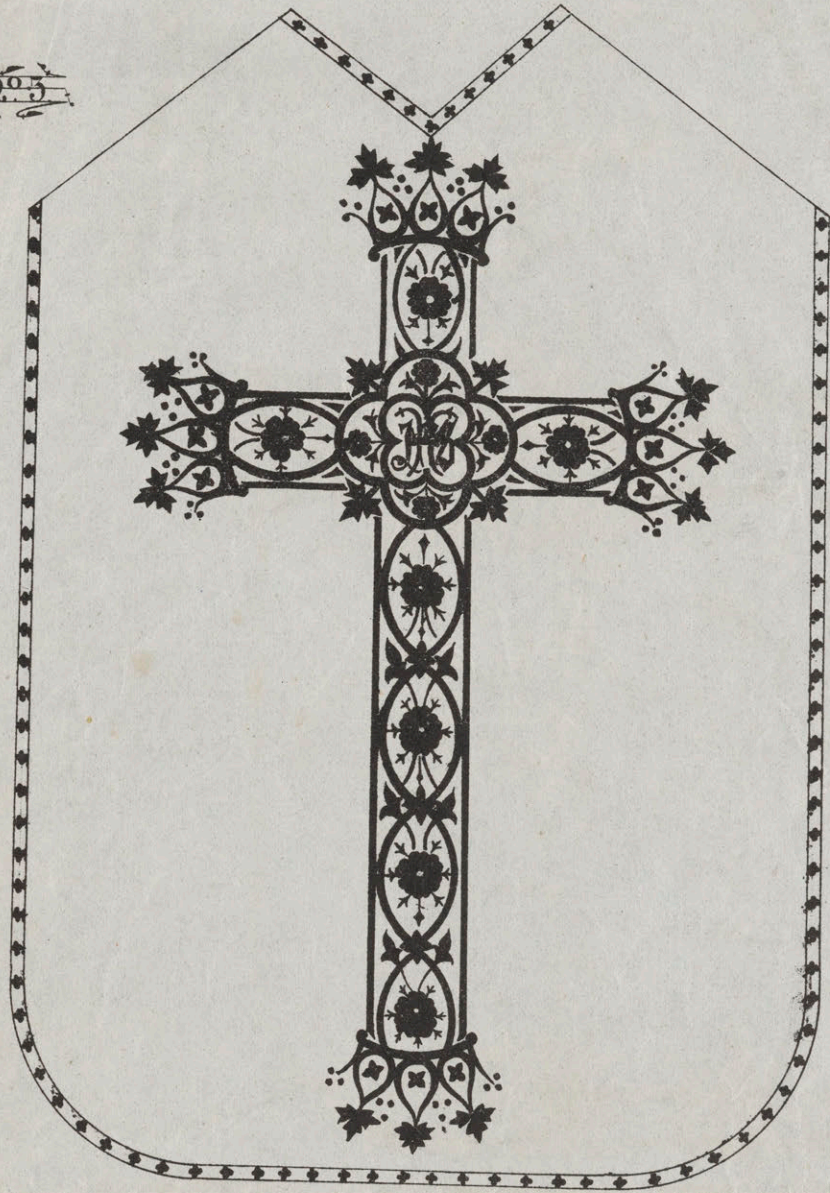
no 1



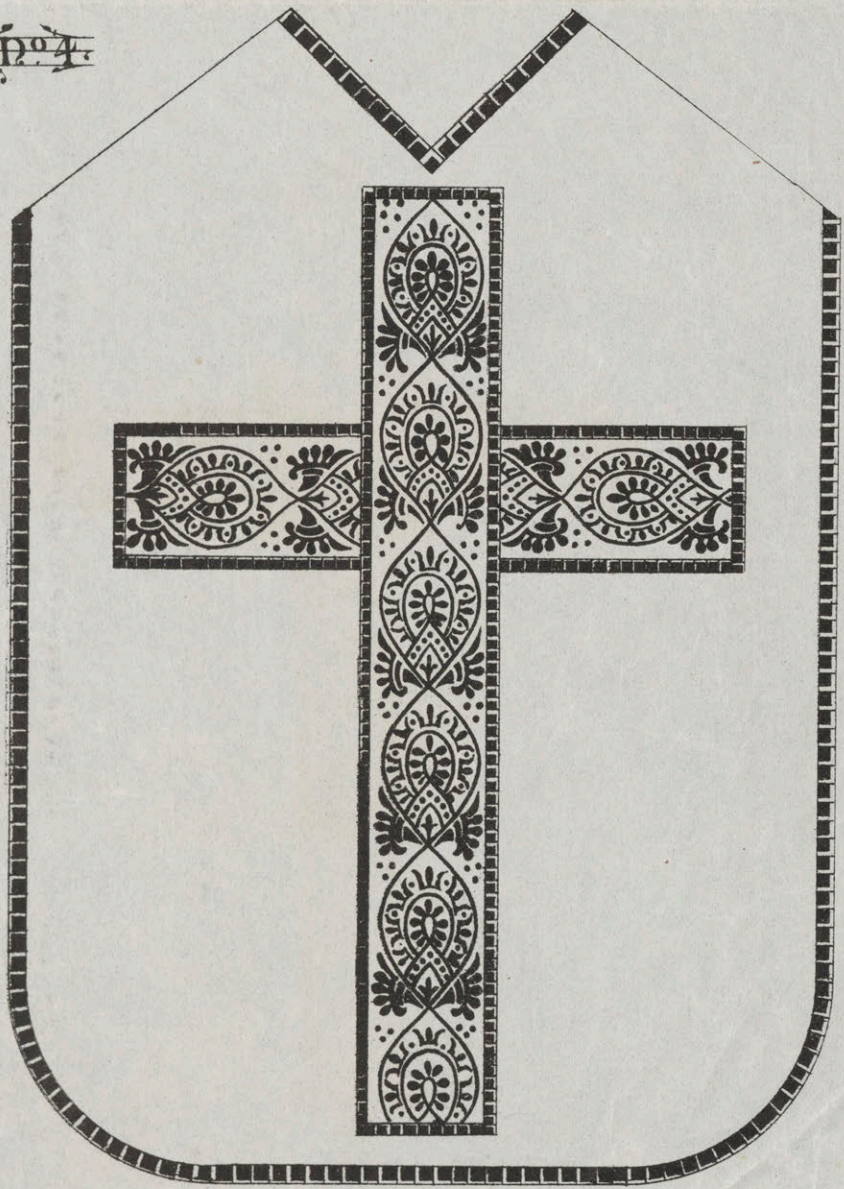
no 2



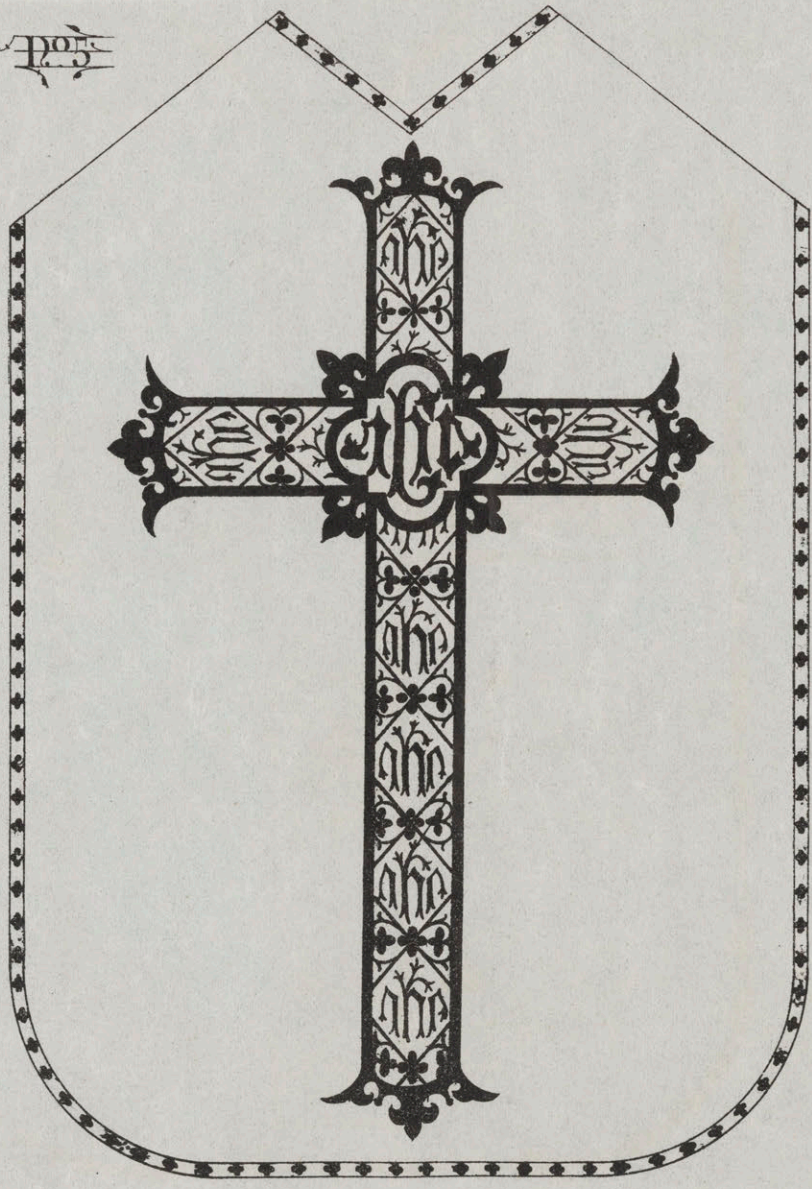
no 3



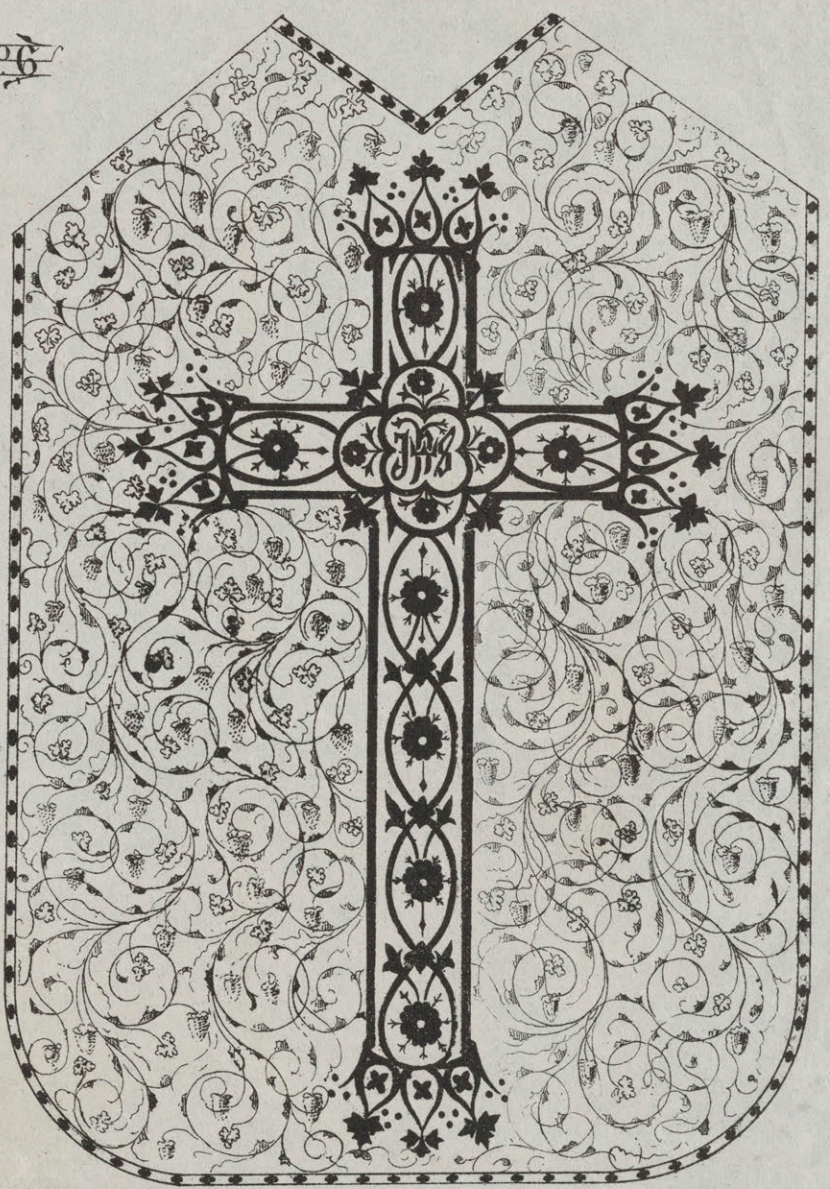
no 4

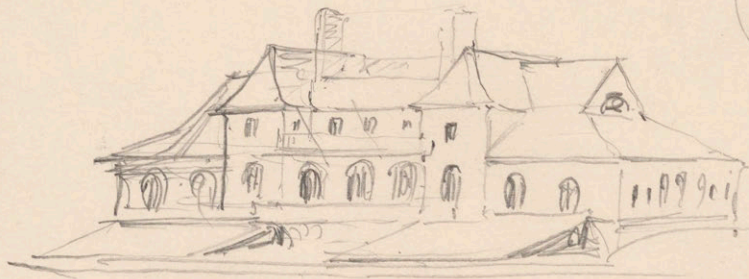


no 5



no 6





~~Cambridge~~ Weld Boat House

April 1933.

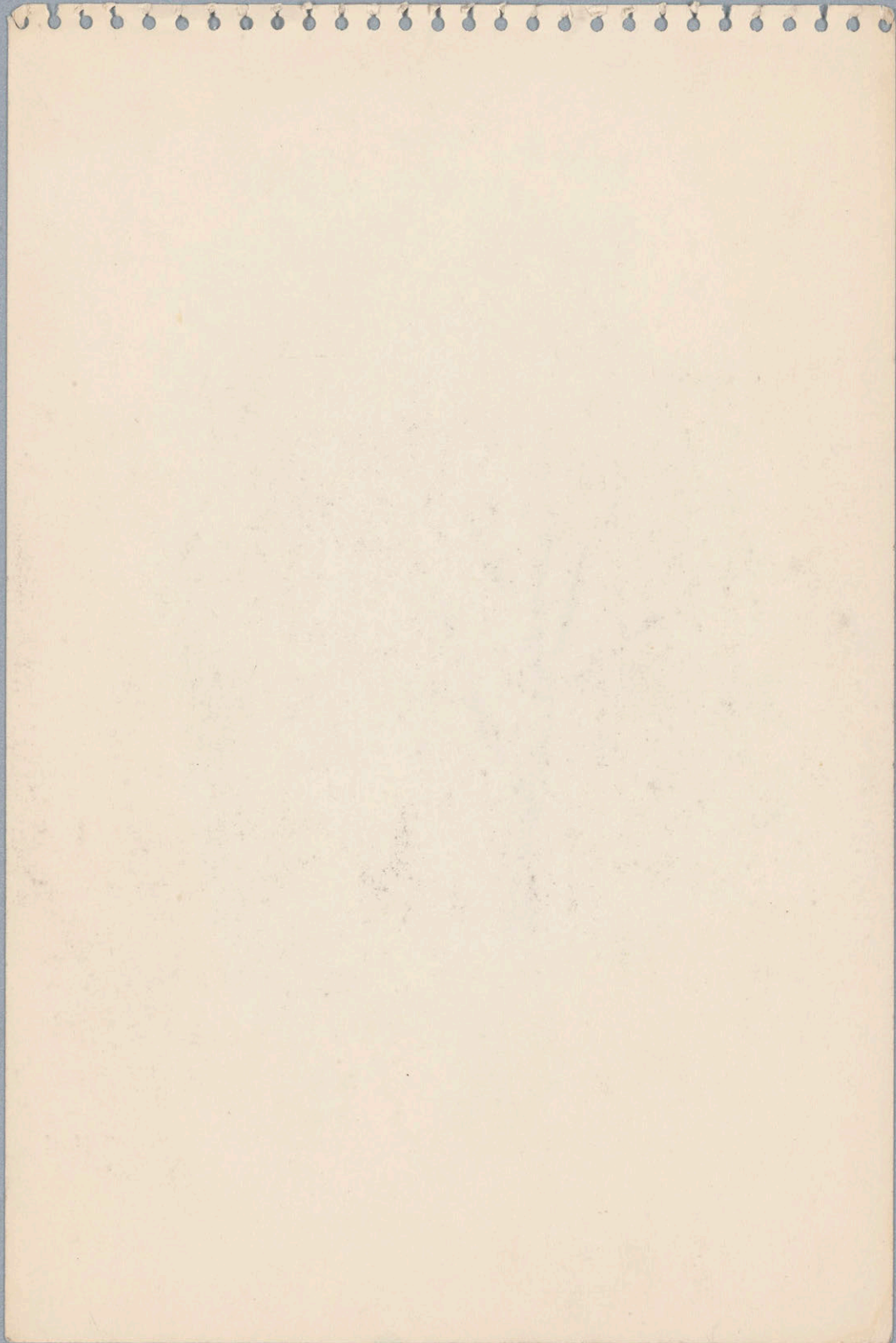
~~Wm. C. C. C.~~
Wm. C. C. C.

April 1955



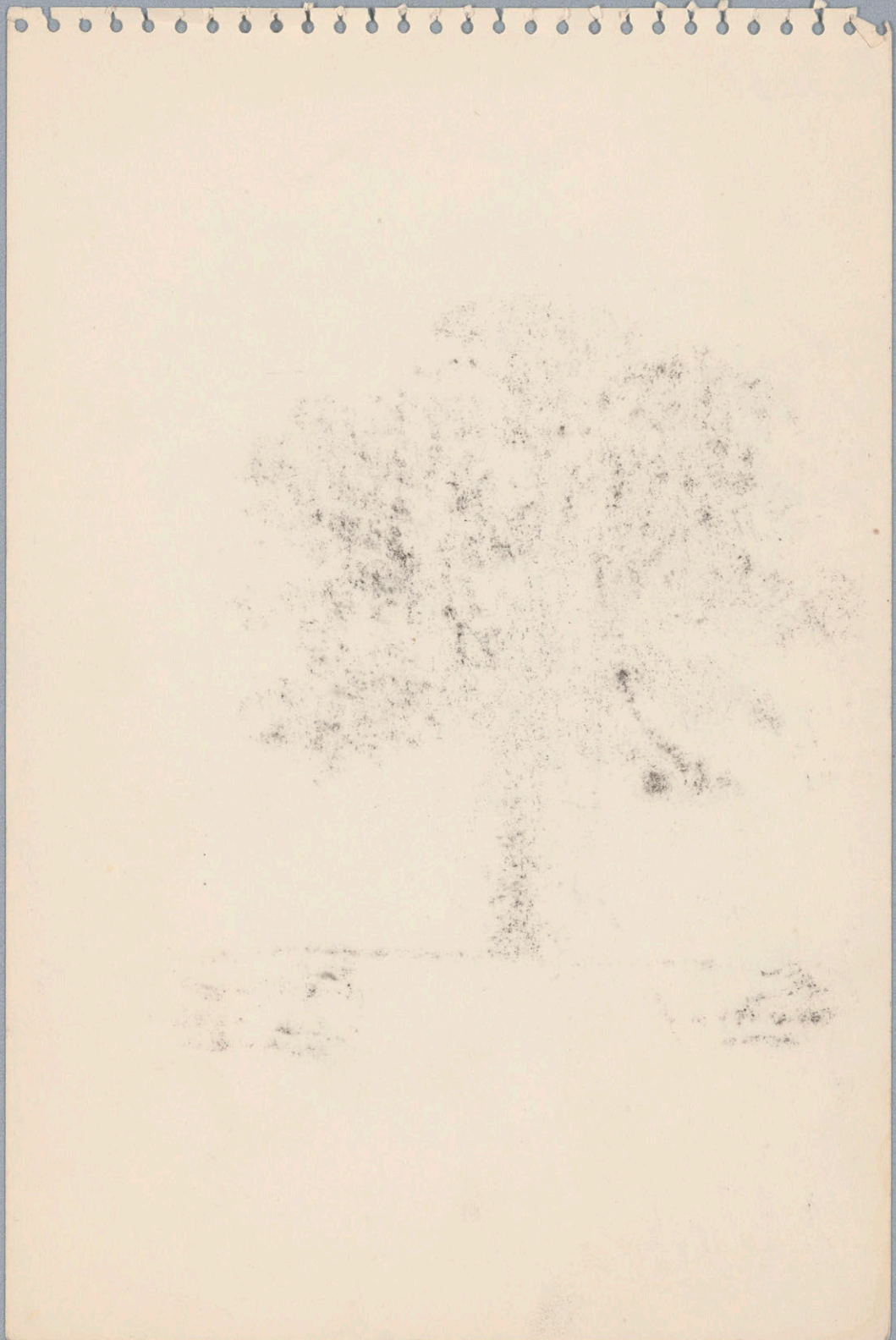
Linden

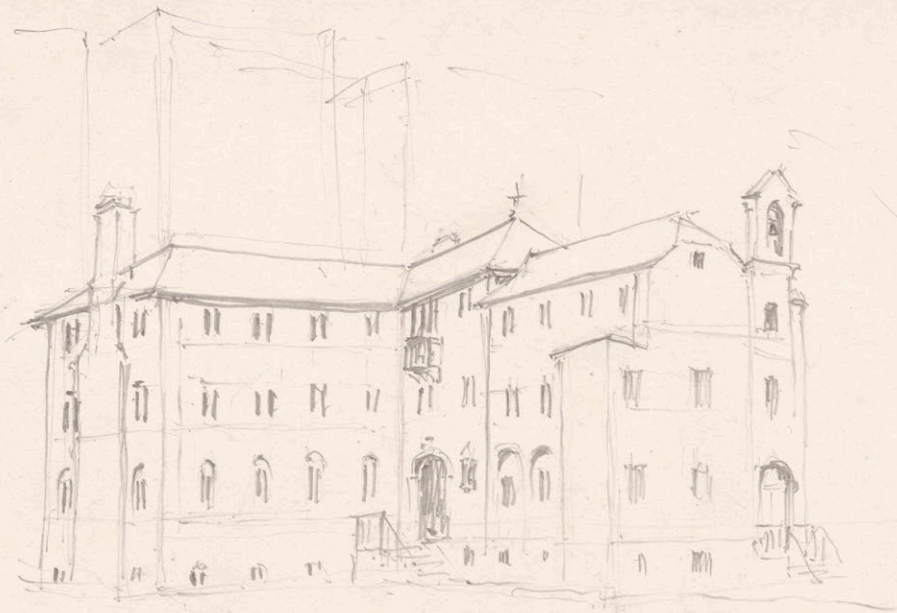
Chamoux
- May 1956 -





Apple Tree
Chamonix May 1936.





Cowley Father's - April 8, 1933



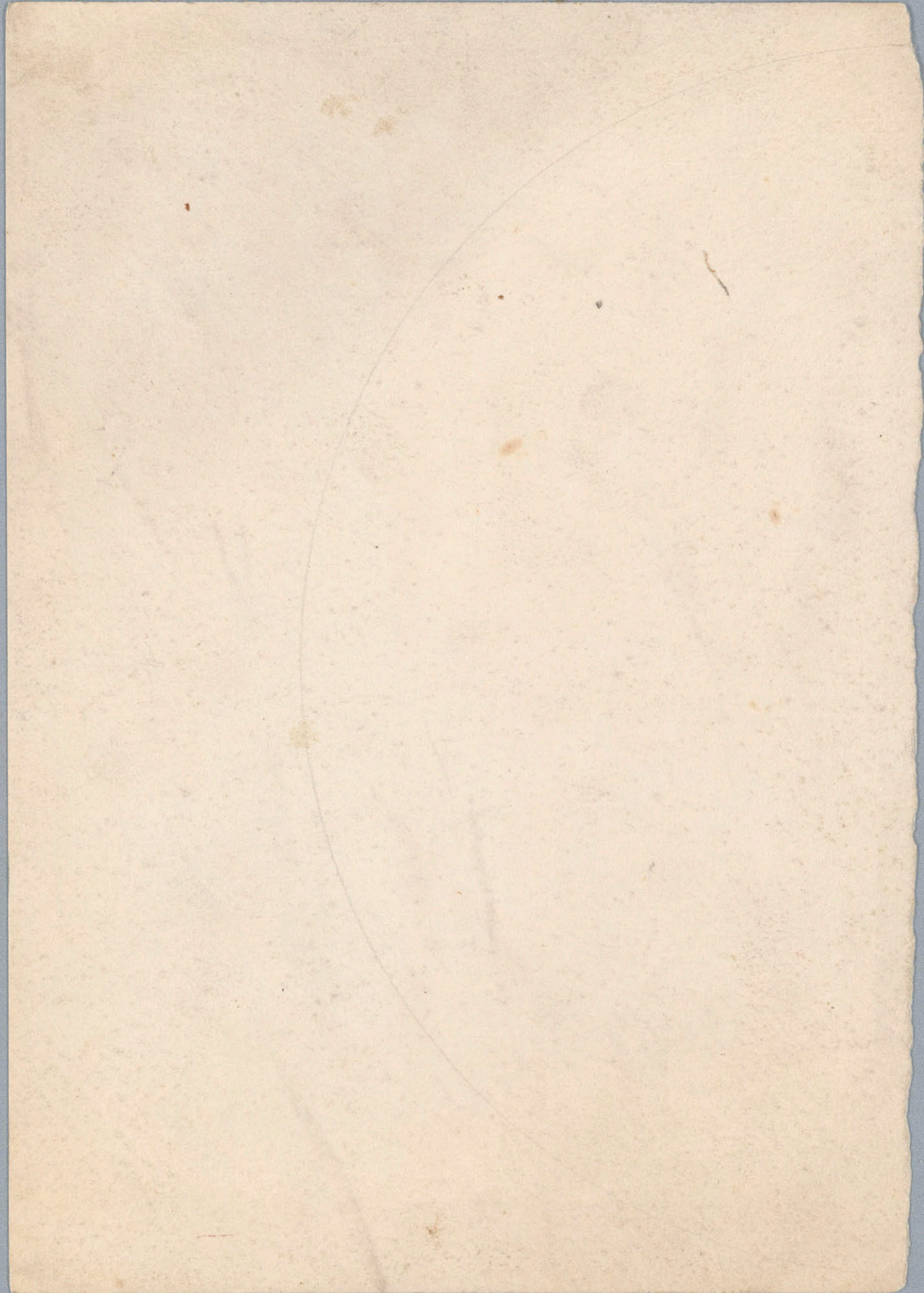


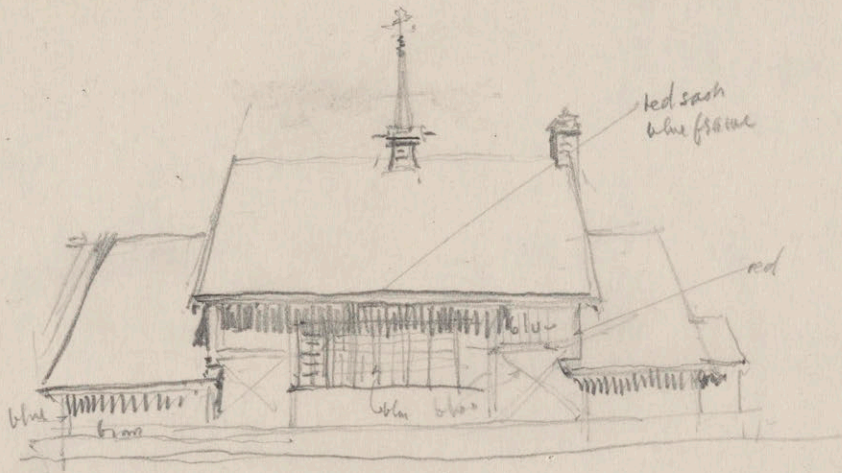
Radcliffe - President's House —

April 8, 1933

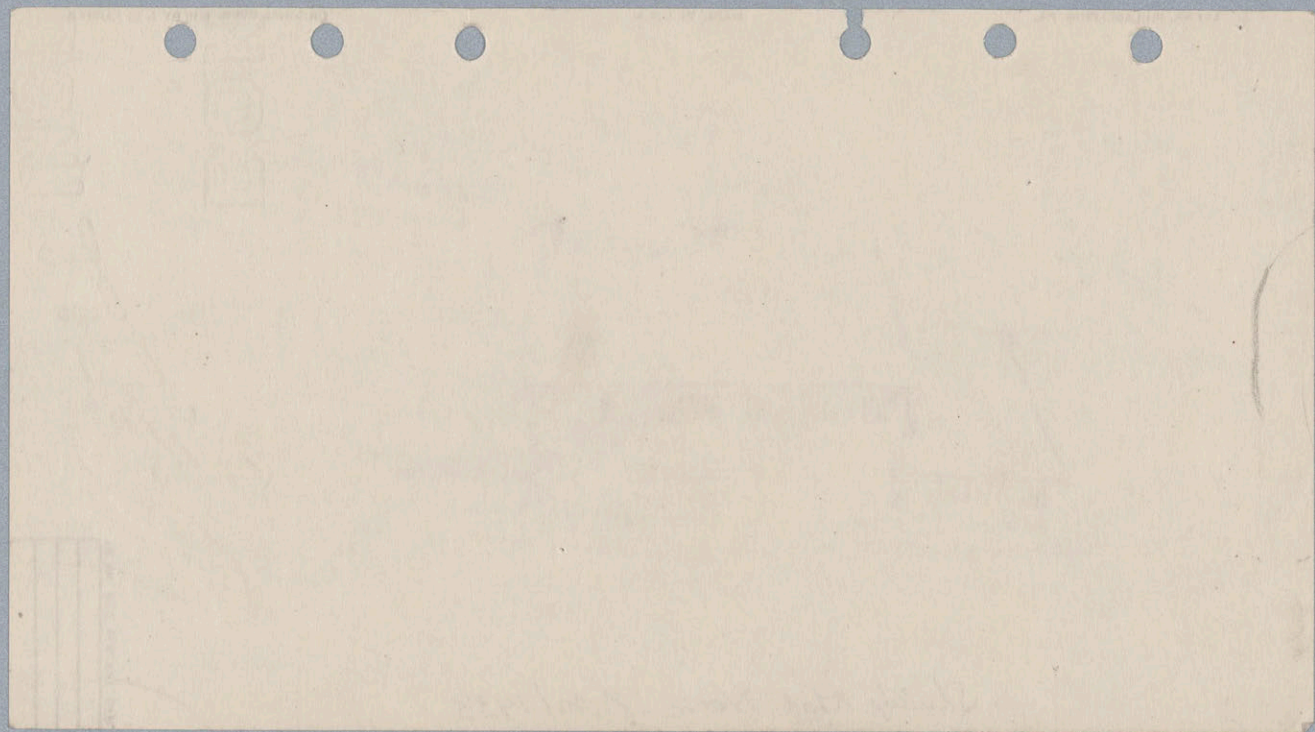






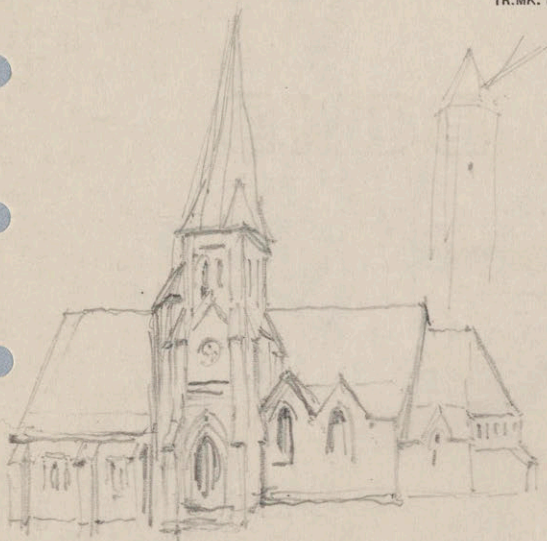


Skating Rink House - April 1933



ORIGINAL COPR. 1910 BY J. C. PARKER

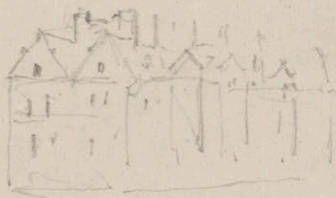
TR. MK. REG. U.S. PAT. OFF.



MADE IN U.S.A.

st John's

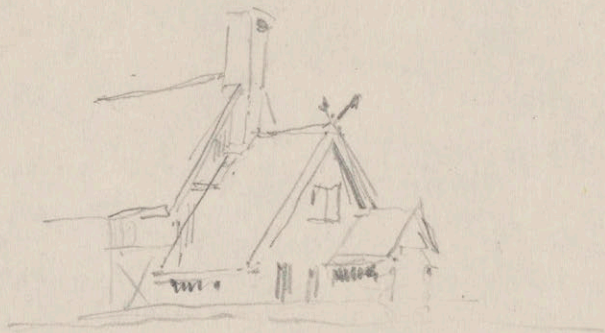
April 1933



LEFAX, PHILADELPHIA, PA.

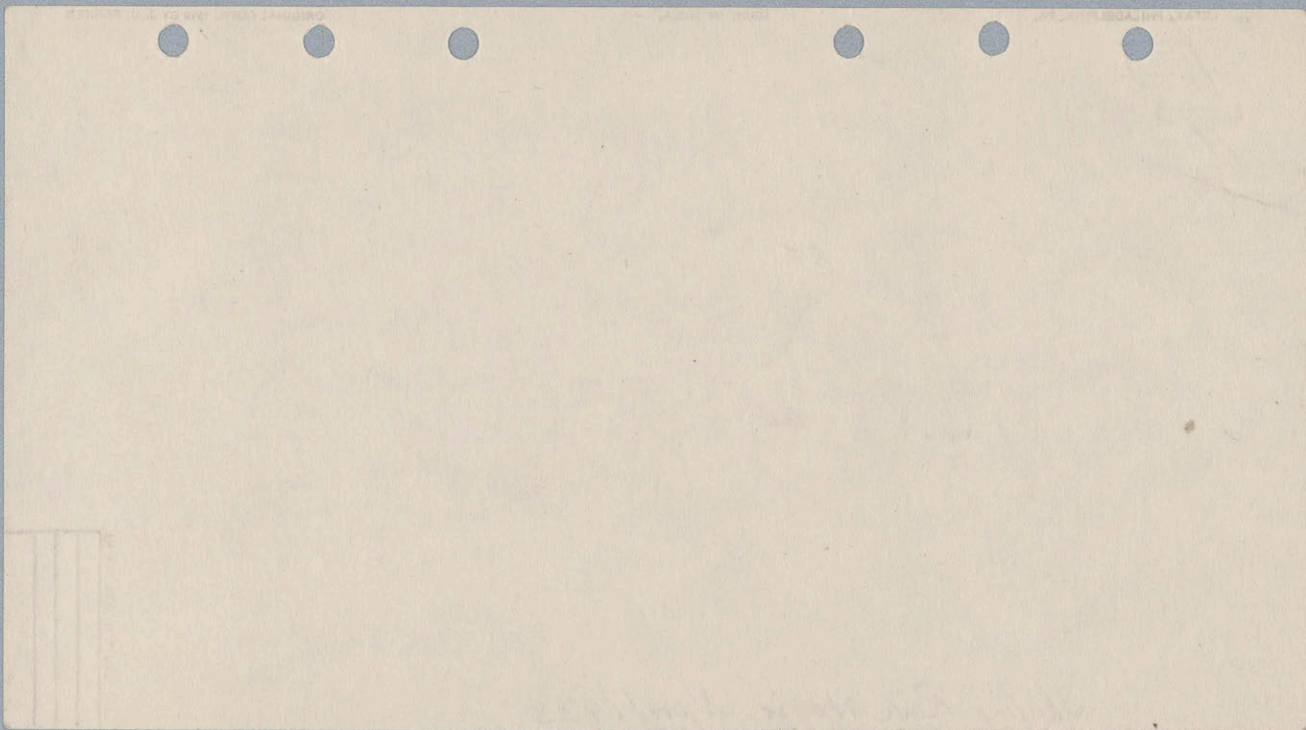
3





Skating Rink House. April 1933

TR. MK. REG. U.S. PAT. OFF.





Windows



Shepard Memorial



ORIGINAL COPR. 1910 BY J. C. PARKER

TR.MK. REG. U.S. PAT. OFF.

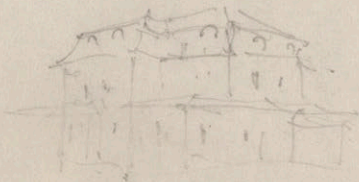
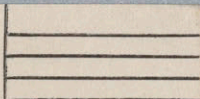
Christian Science



MADE IN U.S.A.

LEFAX, PHILADELPHIA, PA.

33



Conaslock

